

# NEVADA COUNTY OUTDOOR VISITOR SAFETY FUND GRANT PROPOSAL

## ADAM RYAN PRESERVE TRAILHEAD PARKING IMPROVEMENTS

MAY 4, 2022



A BEAR YUBA LAND TRUST PROJECT

**TAB A: ENTITY DESCRIPTION** (approximately 500 words):

Bear Yuba Land Trust (BYLT) is a nonprofit organization that was established in 1990 and has served Nevada and Yuba Counties for over 30 years. Our mission is to protect and defend the natural and working lands in the Bear and Yuba River watersheds and empower a healthy resilient community through nature access and education. To date, BYLT has protected over 18,000 acres of land with conservation easements and fee title ownership for agriculture, open space, and outdoor recreation. BYLT has built and maintains over 45 miles of trails locally and is able to provide expansion and connectivity of trail systems through the acquisition of trail easements on private lands.

BYLT consists of 8 full time staff and a board of directors that is made up of volunteers who oversee the governance and financial stability. Erin Tarr is the Executive Director who manages staff and oversees the organizational operations of BYLT. Ms. Tarr has been with the organization for 10 years in different roles and has led the organization for 4 years. Ms. Tarr has successfully completed numerous projects that include land conservation and recreational development with experienced staff.

The community that is served by BYLT includes landowners that desire to conserve their lands or provide recreational access through their lands, the broader community that enjoys using trails for recreation or commuting, and other residents that enjoy protection of open space for wildlife and agriculture.

BYLT has taken on the role of a major recreation provider in Nevada County without the necessary resources to maintain all of the infrastructure necessary. Nevada County's efforts to assist with funding towards outdoor visitor safety is a momentous step that will allow organizations, such as ours, to provide the infrastructure needed to improve safety to these public spaces that hold so much value to the community.

## **TAB B: COVID-19 IMPACTS**

The COVID-19 pandemic impacted our organization due to the dramatic increased use of our public access Preserves and trail systems. Since March 2020, BYLT has focused efforts and resources toward improving and expanding the trail infrastructure at our trailheads and Preserves. A great example of a successful project that was completed as a response to COVID impacts is the expansion of the parking lot that is on Gracie Road in Nevada City. BYLT holds a public access easement on BLM land here and was able to get approval to expand the parking area and pave the entrance for better access. Garbage and recycling cans were installed to protect from wildlife and signage was updated. This was a collaborative effort that the Nevada County Contractors Association, Waste Management, Hansen Brothers, C&D Construction, BYLT and Nevada County all contributed time, materials, and money towards.

In late 2020, BYLT made an effort to improve the parking lot at Adam Ryan Preserve due to the high use and insufficient capacity of the parking area. With limited resources and a partnership with ASPOA, we were able to move the fence and establish 4 new parking spaces. But we didn't solve the overarching issue which is the location of the entrance/exit of the parking area and the public roads. Although COVID-19 has become less prevalent, the interest in outdoor recreation has continued to be high and the need for this parking area to be improved is of high priority.

**TAB C: PROJECT DESCRIPTION** (approximately 500-1500 words):

BYLT's Preserves located in Alta Sierra are the only public recreation areas in this Census Designated Place consisting of about 2,800 homes and 7,300 people. The Adam Ryan Preserve is one of our highest use public trails and receives constant visitation. Numerous times the parking area has proven insufficient and people are forced to park across Dog Bar Road and cross in a dangerous area.

A new access way will be constructed on to the property from Dog Bar Road, approximately 150 feet south of Alta Sierra Drive. This location has good site distance in both directions. From the intersection a short access way will be constructed into the parking area (see attached sketch). A gate will be constructed to allow access into the preserve for maintenance purposes, as well as for utility access. The parking area utilizes an area that is encumbered by utilities (phone and power lines). The parking area will accommodate 15 or more vehicles, twice the capacity of the existing area.

Construction of the new access point on Dog Bar Road will require an encroachment permit from the County Department of Public Works. Also, construction of the parking area may require securing an encroachment permit from Nevada Irrigation District, a portion of the project may fall within the easement area for the Rattlesnake Canal siphon.

## **TAB D: COMMUNITY BENEFIT**

The current parking situation for the Adam Ryan Preserve does not accommodate the increased number of users the Preserve and trails are now serving. In addition, the ingress/egress does not meet safety standards, as access is through a busy intersection. Safety of users is the number one concern being addressed. Increasing capacity will also increase safety because when the existing parking area is full, Preserve visitors park on the shoulders of the two busy roads, and at times further impact safety by blocking the view of drivers in the intersection.

The improvements will also include surfacing the access way into the parking area with an asphalt apron at the junction with Dog Bar Road, and crushed rock within the parking area and interior access way. This will reduce sedimentation during rainy periods and reduce dust during dry periods.

Constructing the new parking area will greatly enhance the Adam Ryan Preserve with much safer and more pleasing access to the trails and the area.

## **TAB E: LEVERAGING PARTNERSHIPS AND RESOURCES**

The Adam Ryan Preserve parking area improvement project has the support of the Alta Sierra Property Owners Association; (ASPOA) and the Association sees this project as an asset that enhances the safety to visitors at Adam Ryan Preserve and its trail system. ASPOA will continue to support the BYLT trail maintenance program and the adopt-a-trail program.

ASPOA will provide funding in the amount of \$750 if the project is selected. ASPOA is not a mandatory HOA and homeowners are not required to pay dues unless they choose to become members for about \$50/year. So, they do not have additional funding to contribute. In addition, ASPOA will provide volunteers that will assist in the construction.

BYLT will provide oversight and management of the project as a contribution of resources to this project. In addition, BYLT volunteers will be utilized to provide labor for some aspects of the project, such as fence restoration and fence construction, trail realignment, sign installation, and brush removal.

## **TAB F: MANAGEMENT CAPACITY AND MEASURABLE OUTCOMES**

BYLT has built and/or maintains over 45 miles of trails locally as well as numerous trailhead parking sites. BYLT currently manages the substandard parking area this project would replace and is able to manage the proposed parking site without any additional resources. Construction of the parking area will be scheduled to be completed when ground conditions are most favorable, as is the case with all BYLT trail construction projects.

BYLT will report when the parking area is completed, and monitor use through observations by neighbors, feedback from trail and users, and by working with the ASPOA to gain additional feedback.



**TAB G: BUDGET AND FINANCIALS** (approximately 500 words for items “a” and “b” below; items “c” and “d” below are separate attachments):

- a. What is your total funding request for this grant?

BYLT is requesting \$99,500 for this project.

- b. Provide a brief budget narrative to accompany “Attachment B: Line-Item Budget,” summarizing major expenses and other sources of revenue including matching funds. Be sure to list sources and amounts of matching funds in your budget. (Note: Matching funds are not required but are strongly encouraged, and demonstration of leveraged resources and matching funds will affect score.)

The funds would go directly to contractors that would implement the project. The costs include removal of one tree and stump, site preparation, paving the entrance skirt to the new ‘driveway’, installation of new storm drain, graveling the entire area, and grading or engineering permits if needed. Additional funds will be provided by BYLT for oversight and management of the project. ASPOA will contribute a small amount of funding and provide volunteers to help with long term maintenance. BYLT anticipates using a volunteer crew to construct the fence that will block off vehicle access at the current parking lot entrance location. Total in-kind support is estimated to be about \$15,000.

- c. Complete Attachment B: Line-Item Budget Provide an itemized funding request.

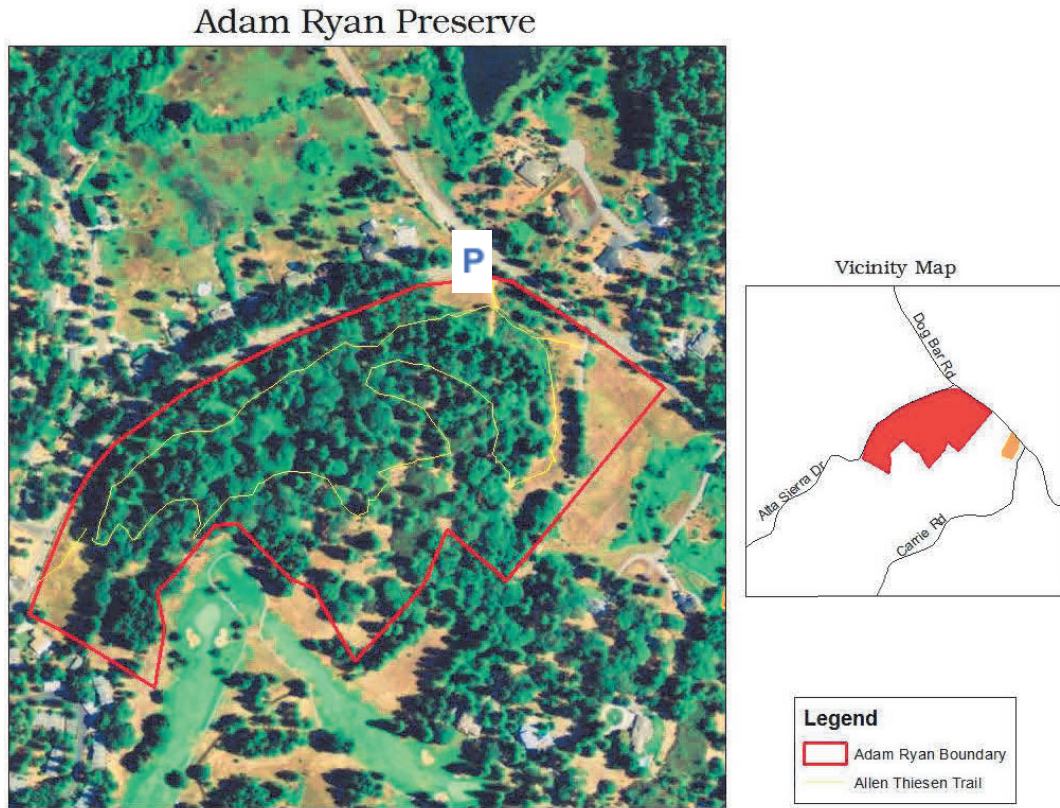
- d. Attach the following financial documents (be sure to label your information as “Confidential” to allow redaction):

- i. For Nonprofits: Audited Financial Statement and 990 (most recent year) ii. For Businesses: State and Federal Tax Returns (most recent year) and Annual Financial Reports, including income statement and balance sheet (most recent year)
- ii. For Special Purpose Districts and State or Federal agencies: Audite Financial Reports (most recent year)



## ATTACHMENTS

Map of Adam Ryan Preserve:



Existing Parking Area:



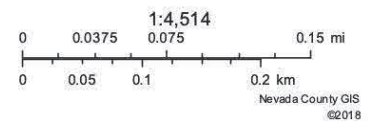


Adam Ryan Preserve Existing/New Entrance:

Nevada County, CA



May 4, 2022



New Parking Lot Sketch:

