



FIRE SEASON UPDATE 2022
BRIAN ESTES – FIRE CHIEF
CAL FIRE - NEVADA YUBA PLACER UNIT

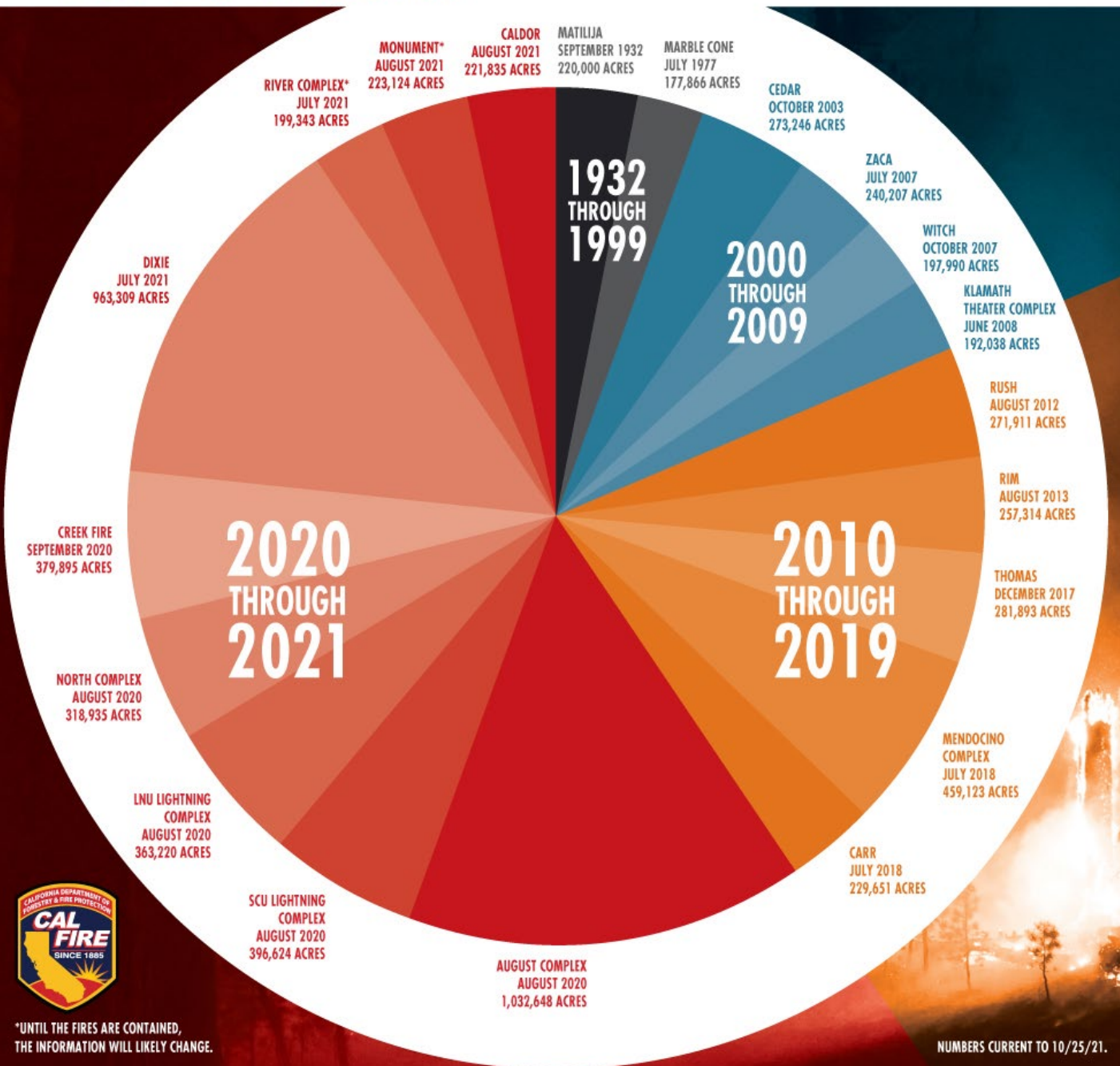


2021 Fire Season Review - Statewide



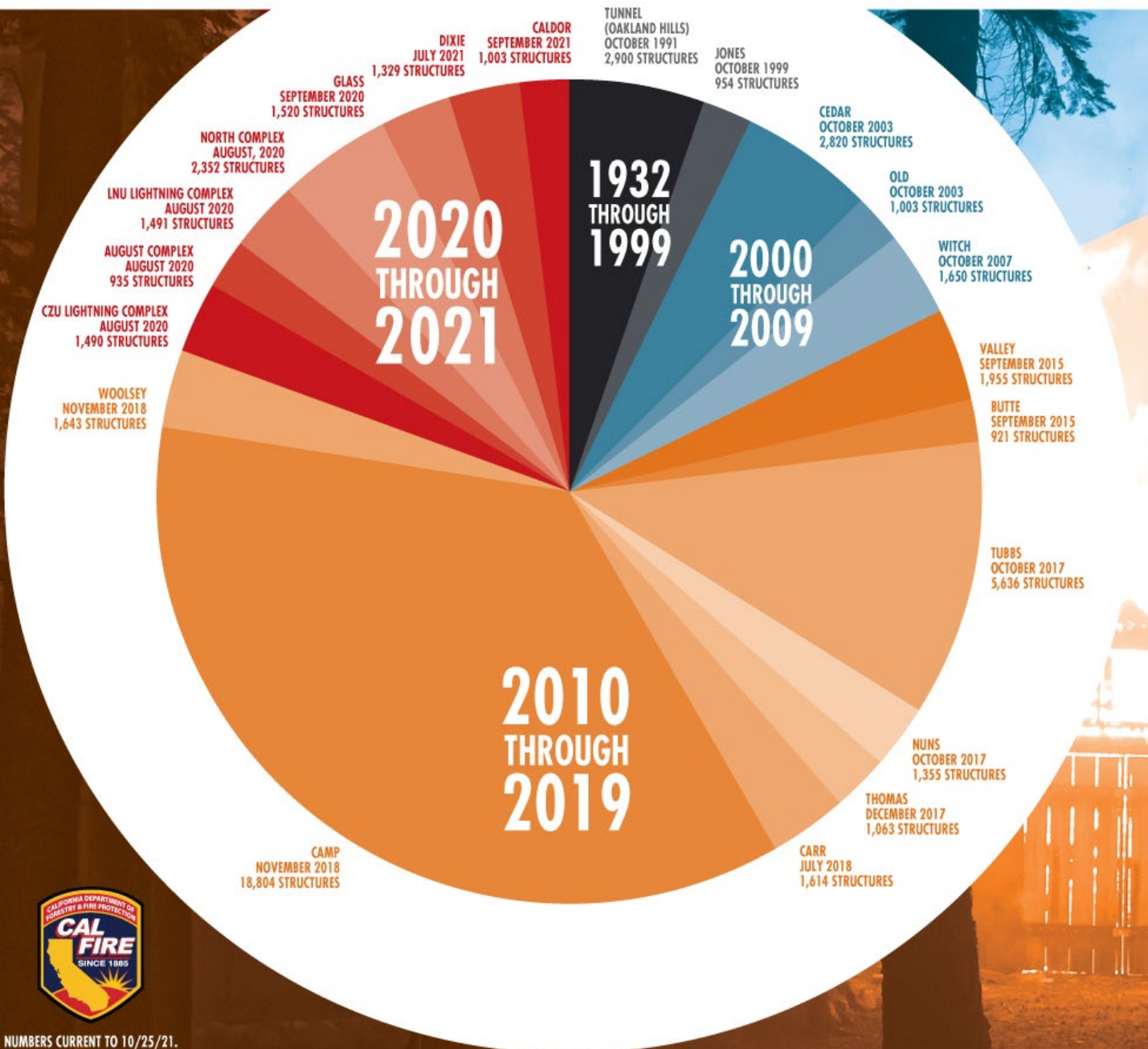
- ▶ **8,306** wildland fires occurred in 2021
- ▶ **2,495,886** acres were burned in 2021
- ▶ **3,626** Structures were destroyed
- ▶ **17,178,000** gallons of retardant dropped
- ▶ **121** arsonists were arrested by **CAL FIRE**
- ▶ **\$1.13 Billion** expended by **CAL FIRE** for suppression of these fires

TOP 20 LARGEST CALIFORNIA WILDFIRES



- ▶ **SRA:** 33 million acres - private land ownerships in unincorporated areas
- ▶ **FRA:** Public Lands managed by Federal Land Management Agencies
- ▶ **LRA:** Local Municipalities, typically incorporated
- ▶ CAL FIRE mission of full suppression and aggressive initial attack on **all fires in SRA or threatened private lands**

TOP 20 DESTRUCTIVE CALIFORNIA WILDFIRES



- ▶ Protection of **Life and Property** always take priority
- ▶ CAL FIRE mission is to contain **95% of new wildland fires at 10 acres or less**
- ▶ Nevada and Placer Counties have some of the highest numbers of habitable structures within the **SRA** in the State
- ▶ CAL FIRE Fuel Reduction efforts center around the **protection of communities and life safety**



2021 Fire Season Review - NEU



- ▶ **361** wildland Fires in Unit
- ▶ **4,876** Acres Burned across Unit
- ▶ 5 yr average is **4,265** Acres
- ▶ Over **210** Structures and outbuildings destroyed across Unit
- ▶ Multiple arson investigations ongoing across Unit

Grass Valley ECC Review - 2021



- ▶ Grass Valley ECC dispatched over **39,000** 9-11 calls in 2021. This generated over **67,000** responses
- ▶ Average of **98** 9-11 calls per day
- ▶ The GVECC dispatches for more than **30 fire and EMS agencies** across the region
- ▶ Statewide, CAL FIRE dispatches and responds to over **600,000 calls for service annually**

2022 Fire Season Update YTD

- ▶ STATEWIDE STATISTICS YTD
- ▶ **325,546** incidents responded to by CAL FIRE in 2022 YTD
- ▶ **4,667** wildland fires YTD in 2022
- ▶ **28,845** acres burned YTD in 2022



2022 Fire Season Update YTD



- ▶ **LOCAL STATISTICS YTD**
- ▶ **21,502** incidents responded to in NEU YTD
- ▶ **282** wildland fires in NEU YTD in 2022
- ▶ **1,627** acres burned in NEU YTD in 2022
- ▶ **27** Structures destroyed across NEU

Grant Funding for 2022 - NEU



- ▶ Phase 2 of the NFASFB
- ▶ Phase 2 of the Ponderosa West DZ
- ▶ **\$1 Million** in Direct Funding to mitigate storm damage in Nevada County
- ▶ Fire Prevention Grants in Placer, Nevada, and Yuba Counties **totaling almost \$8 Million**

Operational Update for August 2022 in NEU



- ▶ **Peak and augmentation Staffing across all SRA**
 - 22 Frontline Engines
 - 4 Hand Crews
 - 4 Dozers
 - 430 personnel
- ▶ **Type II Helicopter** at Auburn HQ
- ▶ **Type I Helicopter** at Truckee Airport
- ▶ **National Guard Hand Crews** funded permanently July 1 in Unit
- ▶ **Heavy Equipment** Augmentation

Priorities for 2022 - NEU



- ▶ **Evacuation Planning** efforts and mapping
- ▶ **Ignition Management Plans** and Unit Strategic Fire Plan priorities
- ▶ **Work on solutions for deterioration of Inmate Firefighting Crew Program**

Priorities for 2022 - NEU



- ▶ Continue to work with Leadership from **Nevada County BOS**
- ▶ Relationships with **Allied Fire and LE Agencies**
- ▶ **Remain vigilant in our commitment to aggressive initial attack, care for our employees, and service to our communities**

Thank you for your Support!

