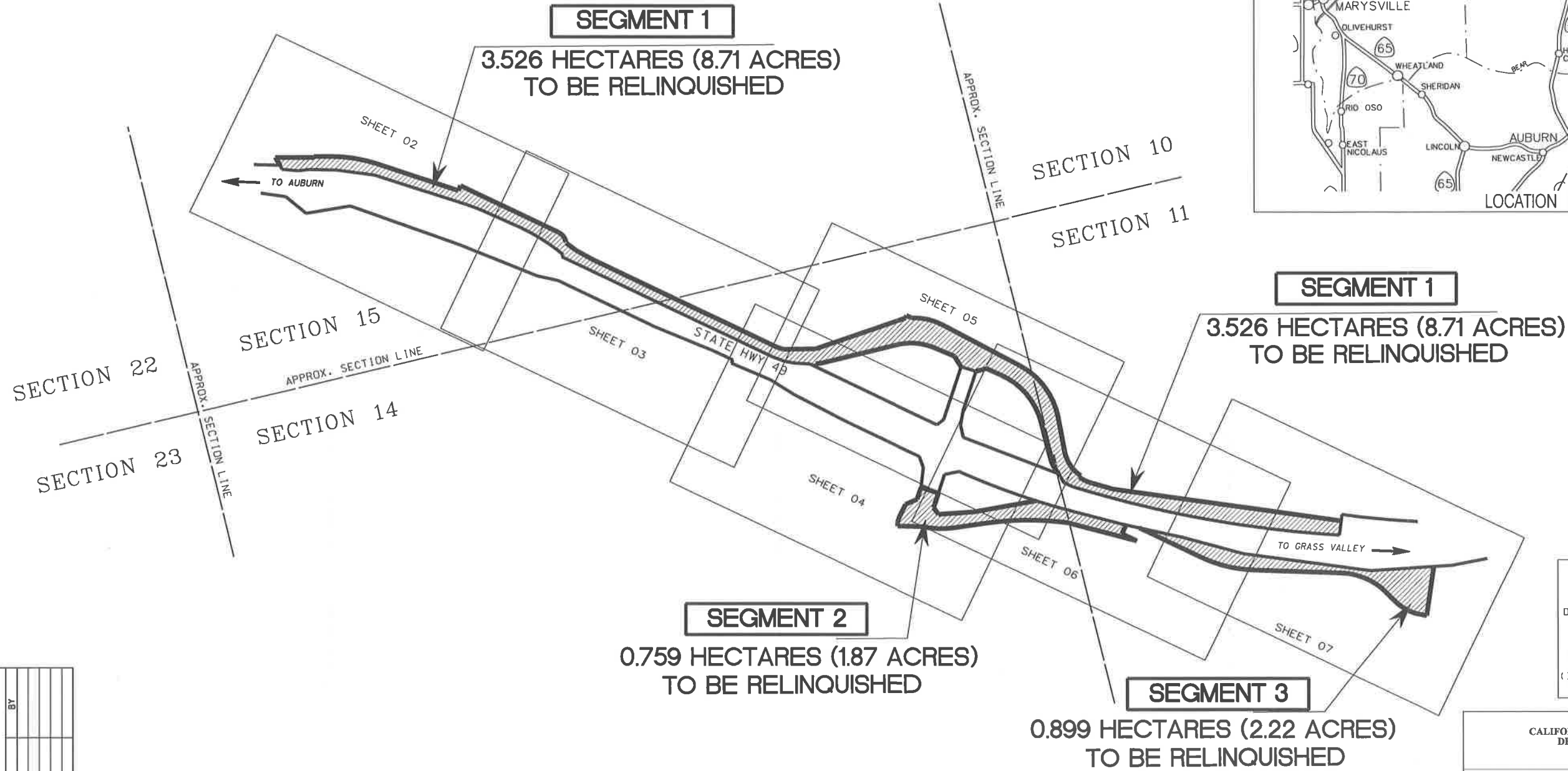
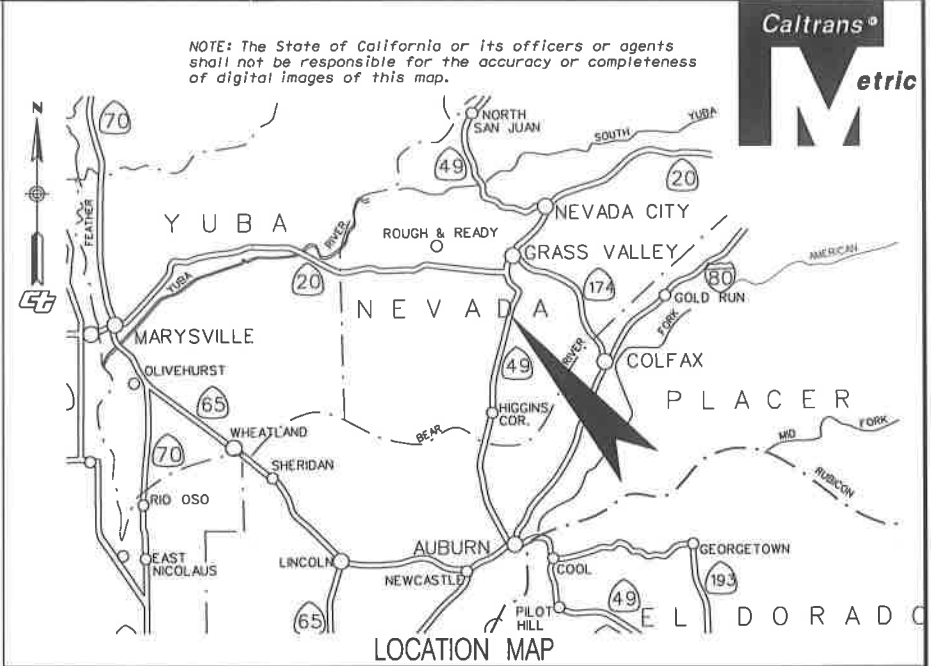
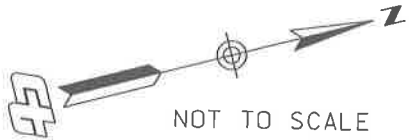


EXHIBIT 2

STATE OF CALIFORNIA
DEPARTMENT OF TRANSPORTATION
RIGHT OF WAY RELINQUISHMENT MAP
STATE HIGHWAY ROUTE 49
IN NEVADA COUNTY
HIGHWAY 49 WIDENING AT LA BARR MEADOWS



R/W PROJECT SURVEYOR		BY	DATE
DATE	REVISIONS		

COORDINATES, BEARINGS AND DISTANCES ARE BASED ON THE CALIFORNIA COORDINATE SYSTEM OF 1983, ZONE 2, EPOCH 1991.35.

COORDINATES AND DISTANCES ARE METERS. TO CONVERT METERS TO U.S. SURVEY FEET, MULTIPLY DISTANCES BY 3937/1200.

MULTIPLY GRID DISTANCES BY 1.00022 TO OBTAIN GROUND DISTANCES.

STATE RIGHTS ARE NOT EXTINGUISHED UNTIL THE RELATED CALIFORNIA TRANSPORTATION COMMISSION RESOLUTION IS RECORDED.

ACCESS PROHIBITED
DIMENSION POINT
AREA TO BE RELINQUISHED

FILED FOR RECORD IN
STATE HIGHWAY MAPBOOK NO. _____
DATE: _____ AT PAGE _____
RECORDERS INDEX NO. _____
RECORDS OF NEVADA COUNTY
(In compliance with Sections 128 & 129 of the STREETS & HIGHWAYS Code)

STATE OF CALIFORNIA
CALIFORNIA STATE TRANSPORTATION AGENCY
DEPARTMENT OF TRANSPORTATION
DISTRICT 3
RIGHT OF WAY ENGINEERING

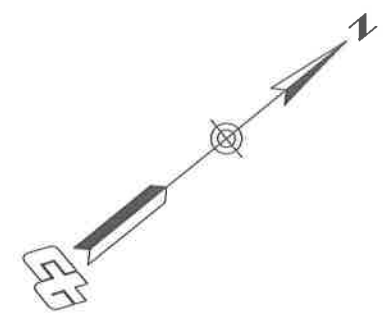
RELINQUISHMENT MAP
035933-X
COUNTY OF NEVADA

LICENSED LAND SURVEYOR DATE
DIST. CO. RTE. POST MILE SHEET NO.
03 NEV 49 9.9 - 11.0 1 OF 7

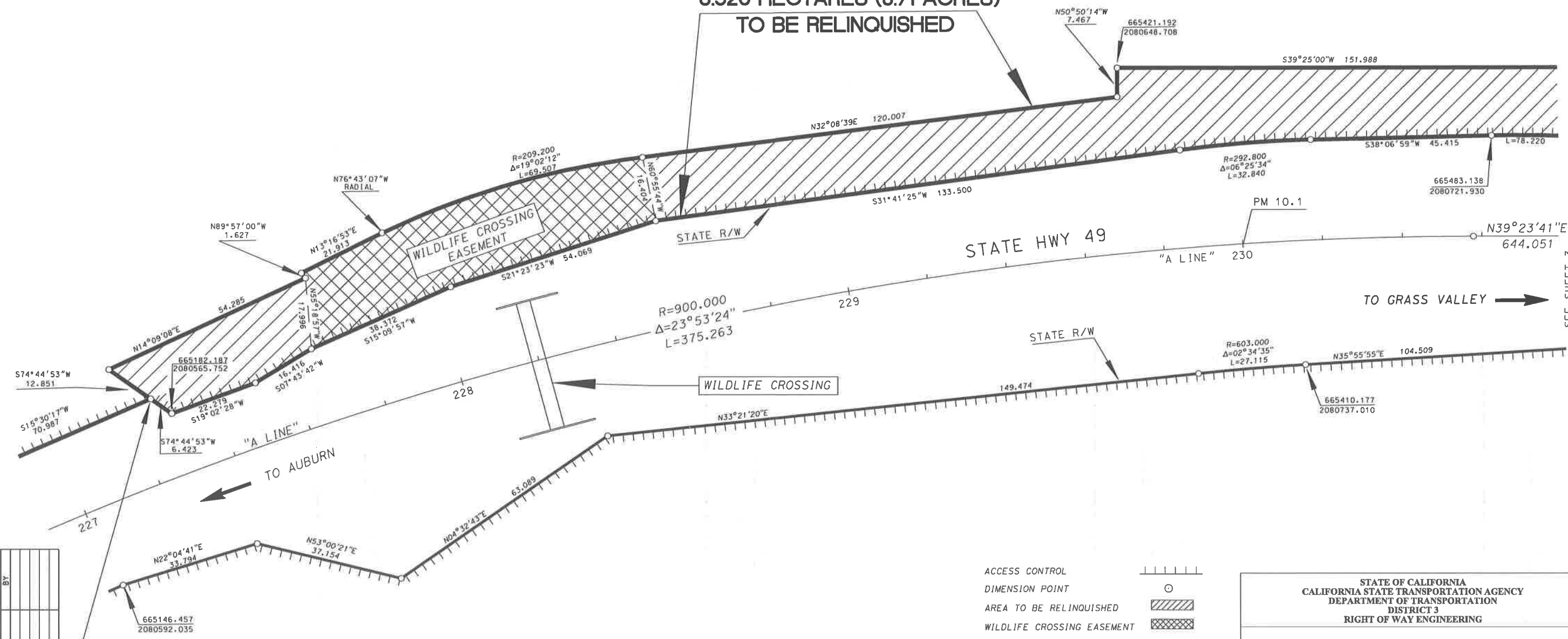
PROFESSIONAL LAND SURVEYOR
DAVID P. THIEMANN
No. 7199
Exp. 12-31-19
STATE OF CALIFORNIA

T. 15 N, R. 8 E, MDM
COUNTY OF NEVADA
SECTION 15

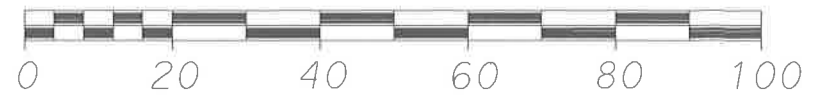
NOTE: The State of California or its officers or agents shall not be responsible for the accuracy or completeness of digital images of this map.



SEGMENT 1
3.526 HECTARES (8.71 ACRES)
TO BE RELINQUISHED



RESERVING AN EASEMENT FOR WILDLIFE CROSSING
SEGMENT 1 OF THIS RELINQUISHMENT AS SHOWN.



- ACCESS CONTROL
- DIMENSION POINT
- AREA TO BE RELINQUISHED
- WILDLIFE CROSSING EASEMENT

COORDINATES, BEARINGS AND DISTANCES ARE BASED ON THE CALIFORNIA COORDINATE SYSTEM OF 1983, ZONE 2, EPOCH 1991.35.
COORDINATES AND DISTANCES ARE METERS. TO CONVERT METERS TO U.S. SURVEY FEET, MULTIPLY DISTANCES BY 3937/1200.
MULTIPLY GRID DISTANCES BY 1.00022 TO OBTAIN GROUND DISTANCES.
STATE RIGHTS ARE NOT EXTINGUISHED UNTIL THE RELATED CALIFORNIA TRANSPORTATION COMMISSION RESOLUTION IS RECORDED.

STATE OF CALIFORNIA
CALIFORNIA STATE TRANSPORTATION AGENCY
DEPARTMENT OF TRANSPORTATION
DISTRICT 3
RIGHT OF WAY ENGINEERING

RELINQUISHMENT MAP
035933-X
COUNTY OF NEVADA

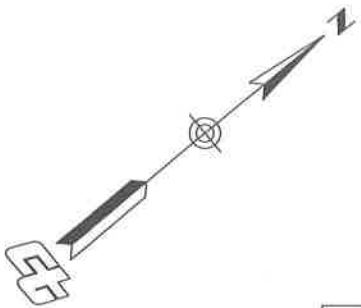
DIST.	CO.	RTE.	POST MILE	SHEET NO.
03	NEV	49	10.1	2 OF 7

R/W PROJECT SURVEYOR:		BY
DATE	REVISIONS	

Northerly terminus of that certain course described as "North 15°07'15" East 90.987 meters" in the deed recorded in document number 2010-0017196

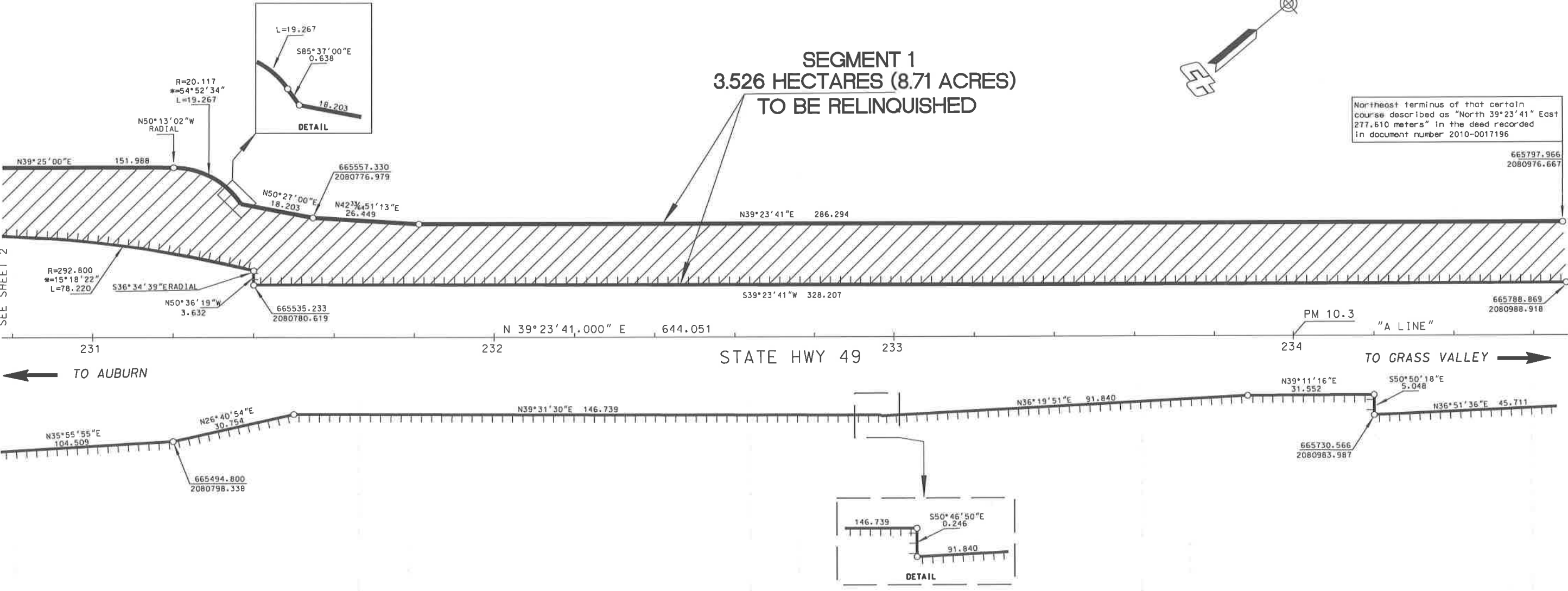
T. 15 N, R. 8 E, MDM
COUNTY OF NEVADA
SECTION 15

NOTE: The State of California or its officers or agents shall not be responsible for the accuracy or completeness of digital images of this map.



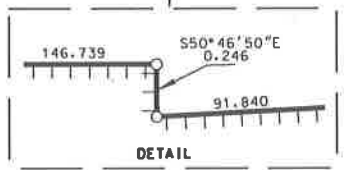
SEGMENT 1
3.526 HECTARES (8.71 ACRES)
TO BE RELINQUISHED

Northeast terminus of that certain course described as "North 39°23'41" East 277.610 meters" in the deed recorded in document number 2010-0017196



SEE SHEET 2

SEE SHEET 4



R/W PROJECT SURVEYOR:		BY
DATE	REVISIONS	
-	-	-
-	-	-
-	-	-
-	-	-

ACCESS PROHIBITED
DIMENSION POINT
AREA TO BE RELINQUISHED



COORDINATES, BEARINGS AND DISTANCES ARE BASED ON THE CALIFORNIA COORDINATE SYSTEM OF 1983, ZONE 2, EPOCH 1991.35.
COORDINATES AND DISTANCES ARE METERS. TO CONVERT METERS TO U.S. SURVEY FEET, MULTIPLY DISTANCES BY 3937/1200.
MULTIPLY GRID DISTANCES BY 1.00022 TO OBTAIN GROUND DISTANCES.
STATE RIGHTS ARE NOT EXTINGUISHED UNTIL THE RELATED CALIFORNIA TRANSPORTATION COMMISSION RESOLUTION IS RECORDED.

STATE OF CALIFORNIA
CALIFORNIA STATE TRANSPORTATION AGENCY
DEPARTMENT OF TRANSPORTATION
DISTRICT 3
RIGHT OF WAY ENGINEERING

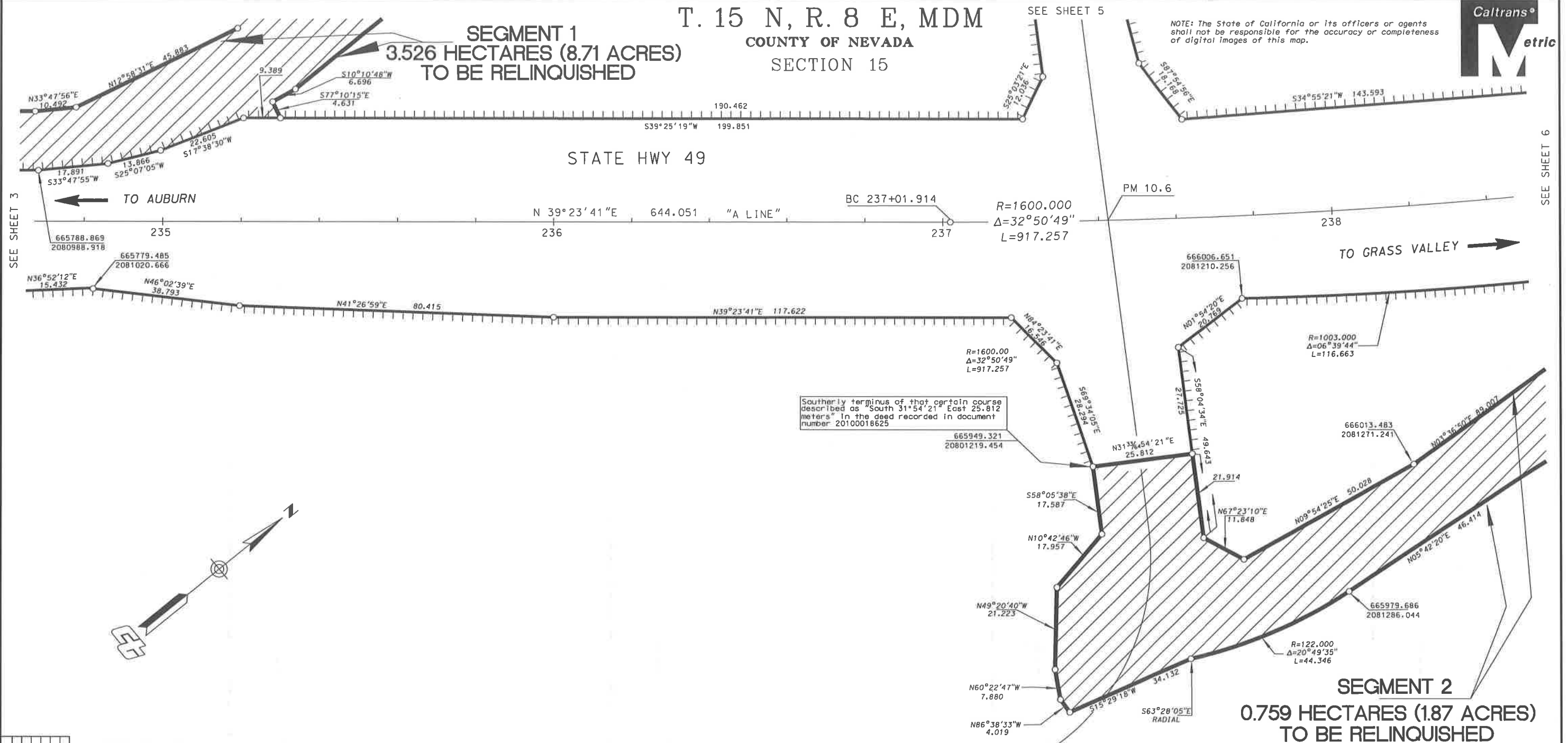
RELINQUISHMENT MAP
035933-X
COUNTY OF NEVADA

DIST.	CO.	RTE.	POST MILE	SHEET NO.
03	NEV	49	10.3	3 OF 7

T. 15 N, R. 8 E, MDM
COUNTY OF NEVADA
SECTION 15



NOTE: The State of California or its officers or agents shall not be responsible for the accuracy or completeness of digital images of this map.



ACCESS PROHIBITED
DIMENSION POINT
AREA TO BE RELINQUISHED

COORDINATES, BEARINGS AND DISTANCES ARE BASED ON THE CALIFORNIA COORDINATE SYSTEM OF 1983, ZONE 2, EPOCH 1991.35.

COORDINATES AND DISTANCES ARE METERS. TO CONVERT METERS TO U.S. SURVEY FEET, MULTIPLY DISTANCES BY 39.37/1200.

MULTIPLY GRID DISTANCES BY 1.00022 TO OBTAIN GROUND DISTANCES.

STATE RIGHTS ARE NOT EXTINGUISHED UNTIL THE RELATED CALIFORNIA TRANSPORTATION COMMISSION RESOLUTION IS RECORDED.

SEGMENT 2
0.759 HECTARES (1.87 ACRES)
TO BE RELINQUISHED

STATE OF CALIFORNIA
CALIFORNIA STATE TRANSPORTATION AGENCY
DEPARTMENT OF TRANSPORTATION
DISTRICT 3
RIGHT OF WAY ENGINEERING

RELINQUISHMENT MAP
035933-X
COUNTY OF NEVADA

DIST.	CO.	RTE.	POST MILE	SHEET NO.
03	NEV	49	10.6	4 OF 7

ACCESS PROHIBITED
DIMENSION POINT
AREA TO BE RELINQUISHED

COORDINATES, BEARINGS AND DISTANCES ARE BASED ON THE CALIFORNIA COORDINATE SYSTEM OF 1983, ZONE 2, EPOCH 1991.35.

COORDINATES AND DISTANCES ARE METERS. TO CONVERT METERS TO U.S. SURVEY FEET, MULTIPLY DISTANCES BY 3937/1200.

MULTIPLY GRID DISTANCES BY 1.00022 TO OBTAIN GROUND DISTANCES.

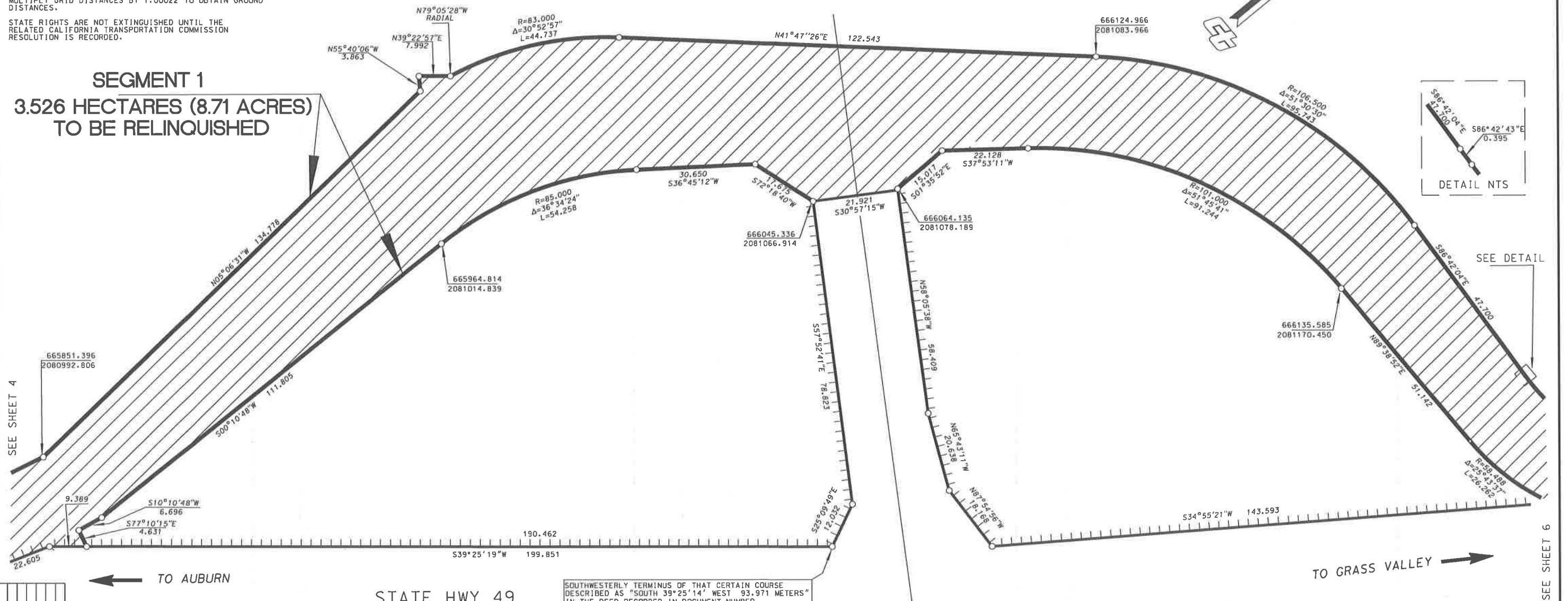
STATE RIGHTS ARE NOT EXTINGUISHED UNTIL THE RELATED CALIFORNIA TRANSPORTATION COMMISSION RESOLUTION IS RECORDED.

T. 15 N, R. 8 E, MDM
COUNTY OF NEVADA
SECTION 15

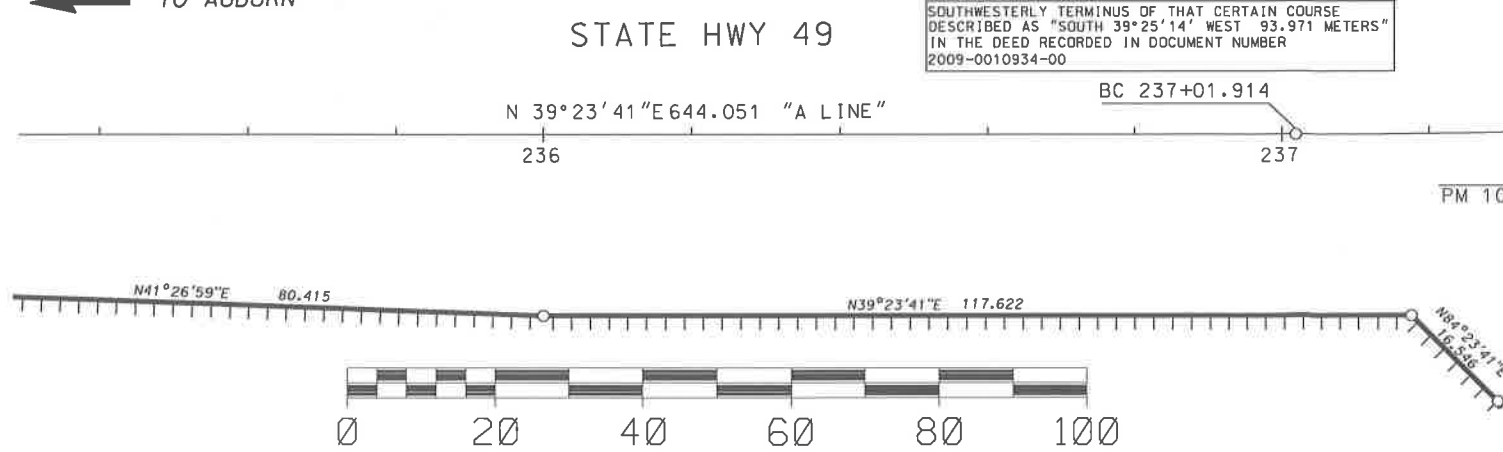
NOTE: The State of California or its officers or agents shall not be responsible for the accuracy or completeness of digital images of this map.



SEGMENT 1
3.526 HECTARES (8.71 ACRES)
TO BE RELINQUISHED



DATE	BY	REVISIONS



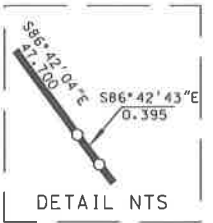
STATE OF CALIFORNIA
CALIFORNIA STATE TRANSPORTATION AGENCY
DEPARTMENT OF TRANSPORTATION
DISTRICT 3
RIGHT OF WAY ENGINEERING

RELINQUISHMENT MAP
035933-X
COUNTY OF NEVADA

DIST.	CO.	RTE.	POST MILE	SHEET NO.
03	NEV	49	10.6	5 OF 7

T. 15 N, R. 8 E, MDM
COUNTY OF NEVADA
SECTION 11

NOTE: The State of California or its officers or agents shall not be responsible for the accuracy or completeness of digital images of this map.



RB#	RADIAL BEARING
RB1	S03°17'01"W
RB2	S41°15'16"E
RB3	S26°04'45"E

C#	RADIUS	DELTA	LENGTH
C1	55.500	43°58'25"	42.595
C2	52.200	18°51'40"	19.488
C3	55.500	63°01'28"	61.049

L#	BEARING	DISTANCE
L1	S40°41'29"E	2.775
L2	N29°53'04"E	30.963
L3	N22°20'13"E	11.315

SEGMENT 1
3.526 HECTARES (8.71 ACRES)
TO BE RELINQUISHED

SEGMENT 3
0.899 HECTARES (2.22 ACRES)
TO BE RELINQUISHED

SEGMENT 2
0.759 HECTARES (1.87 ACRES)
TO BE RELINQUISHED

NORTHERLY TERMINUS OF THAT CERTAIN COURSE DESCRIBED AS "NORTH 28°40'01"EAST 77.235 METERS" IN THE DEED RECORDED IN DOCUMENT NUMBER 2009-0006956.

ACCESS PROHIBITED
DIMENSION POINT
AREA TO BE RELINQUISHED

COORDINATES, BEARINGS AND DISTANCES ARE BASED ON THE CALIFORNIA COORDINATE SYSTEM OF 1983, ZONE 2, EPOCH 1991.35.
COORDINATES AND DISTANCES ARE METERS. TO CONVERT METERS TO U.S. SURVEY FEET, MULTIPLY DISTANCES BY 3937/1200.
MULTIPLY GRID DISTANCES BY 1.00022 TO OBTAIN GROUND DISTANCES.
STATE RIGHTS ARE NOT EXTINGUISHED UNTIL THE RELATED CALIFORNIA TRANSPORTATION COMMISSION RESOLUTION IS RECORDED.



RELINQUISHMENT MAP
035933-X
COUNTY OF NEVADA

DIST.	CO.	RTE.	POST MILE	SHEET NO.
03	NEV	49	10.7	6 OF 7

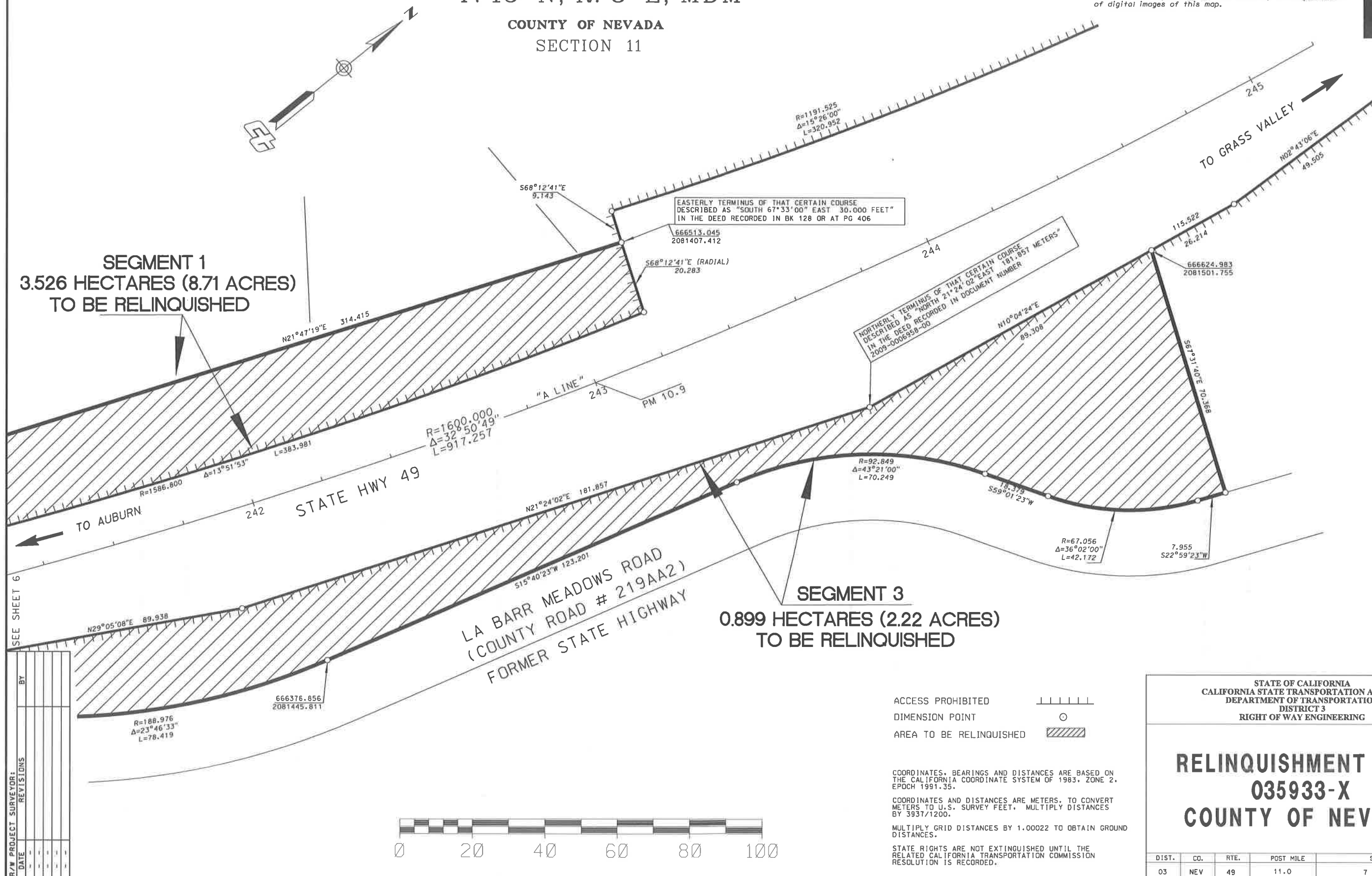
SEE SHEET 5

SEE SHEET 7

R/W PROJECT SURVEYOR	DATE	REVISIONS	BY

COUNTY OF NEVADA
SECTION 11

NOTE: The State of California or its officers or agents shall not be responsible for the accuracy or completeness of digital images of this map.



STATE OF CALIFORNIA
CALIFORNIA STATE TRANSPORTATION AGENCY
DEPARTMENT OF TRANSPORTATION
DISTRICT 3
RIGHT OF WAY ENGINEERING

RELINQUISHMENT MAP

035933-X

COUNTY OF NEVADA