



# **RESOLUTION No. 19-176**

## **OF THE BOARD OF SUPERVISORS OF THE COUNTY OF NEVADA**

### **ACCEPTANCE OF RELINQUISHED RIGHT OF WAY ADJACENT TO STATE ROUTE 49 PM 9.9 THROUGH PM 11.0 PER CALTRANS RELINQUISHMENT MAP 035933-X**

WHEREAS, the State and County entered into a Relinquishment Agreement (Agreement) dated March 12, 2009 and attached hereto as Exhibit 1; and

WHEREAS, per the Agreement, the County agreed to waive the State's obligation to provide ninety (90) days prior notice of State's "Intention to Relinquish" as set forth in the Streets and Highways Code Section 73; and

WHEREAS, per the Agreement, the County agreed to accept ownership of the relinquished facilities upon recordation of the California Transportation Commission's (CTC) Resolution of Relinquishment in the County Recorder's Office and to thereafter operate, maintain and be liable for the relinquished facilities; and

WHEREAS, the State has completed their Project at the intersection of State Route 49 and La Barr Meadows Road.

NOW, THEREFORE, BE IT HEREBY RESOLVED that the Nevada County Board of Supervisors:

1. Accepts, upon recordation of the CTC's Resolution of Relinquishment in the County Recorder's Office, the relinquished right of way as depicted in Relinquishment Map 0353933-X, attached hereto as Exhibit 2, in its current environmental condition and setting, including, but not limited to, the presence of hazardous materials as described in the Initial Site Assessment (ISA) dated 9/28/18.
2. Agrees to waive the ninety (90) day notice of "Intention to Relinquish" requirement contained in Section 73 of the Streets and Highway Code.

PASSED AND ADOPTED by the Board of Supervisors of the County of Nevada at a regular meeting of said Board, held on the 14th day of May, 2019, by the following vote of said Board:

Ayes: Supervisors Heidi Hall, Edward Scofield, Dan Miller, Susan K. Hoek and Richard Anderson.

Noes: None.

Absent: None.

Abstain: None.

ATTEST:

JULIE PATTERSON HUNTER  
Clerk of the Board of Supervisors

By: 

5/14/2019 cc: DPW(1)  
AC\* (hold)



Richard Anderson, Chair

11/19/2019 cc: DPW\*  
AC\*

**COPY**

RECORDING REQUESTED BY:

**STATE OF CALIFORNIA**

NO FEE DOCUMENT  
Govt. Code 6103

WHEN RECORDED, MAIL TO:

State of California  
Department of Transportation  
Right of Way Engineering  
703 B Street, Marysville, CA 95901  
Attn: Dave Thibeault

Nevada County Recorder  
Gregory J. Diaz

Document#: **20190022383**  
Wednesday November 06 2019, at 08:48:31 AM

Paid: \$0.00 CM

---

Space above this line for Recorder's Use

**TITLE**

---

RELINQUISHMENT OF HIGHWAY RIGHT OF WAY IN THE COUNTY OF NEVADA

ROAD 03-NEV-49-PM 9.9/11.0

REQUEST NO. 035933-X CTC RESOLUTION No. R 4030

**TRANSPORTATION COMMISSION  
RESOLUTION No. R-4030**

**PASSED BY**

**CTC**

**OCT 09 2019  
CALIFORNIA  
TRANSPORTATION COMMISSION**

**RELINQUISHMENT OF HIGHWAY RIGHT OF WAY IN THE  
COUNTY OF NEVADA, ROAD 03-NEV-49-PM 9.9/11.0  
Request No. 035933-X**

WHEREAS, by Relinquishment Agreement, dated March 12, 2009, between the County of Nevada and the State of California, the County waived the 90-day notice requirement and agreed to accept title to highway right of way, consisting of realigned and newly constructed frontage roads, and referred to as RELINQUISHED FACILITIES in said agreement, upon relinquishment thereof to said County by the State of California; and

WHEREAS, by Resolution No. 19-176, dated May 14, 2019, the County of Nevada waived the 90-day notice requirement and agreed to accept title to State highway right of way, as depicted in Relinquishment Map 035933-X attached as Exhibit 2 to said Resolution, upon relinquishment thereof to said County by the State of California; and

WHEREAS, the State of California has acquired right of way for and has constructed the above-mentioned collateral facilities in the County of Nevada along Route 49 on Dalewood Way, Braemer Way, Allison Ranch Road, La Barr Meadows Road and Golden Star Road; and

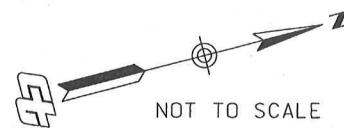
WHEREAS, this Commission has found and determined, and does hereby find and determine, that it is desirable and in the public interest that said highway right of way collateral facilities be relinquished to the County of Nevada for use as county roads.

NOW, THEREFORE, IT IS VOTED by the California Transportation Commission that it relinquish and it does hereby relinquish, to the County of Nevada, effective upon the recordation of a certified copy hereof with the Recorder of Nevada County, all of the State of California's right, title and interest in and to said collateral facilities in said county, together with the right of way and appurtenances thereof, described as follows:

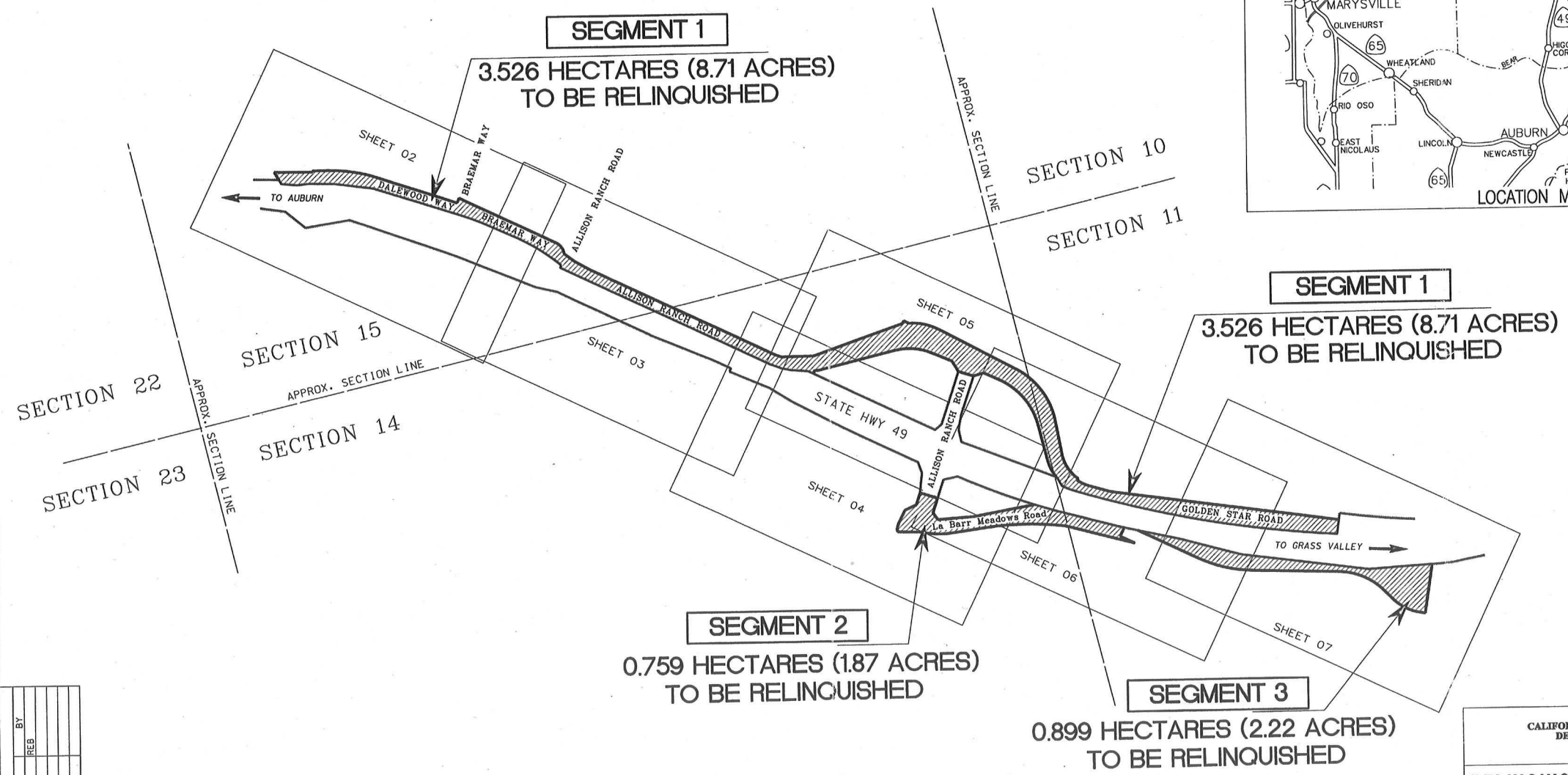
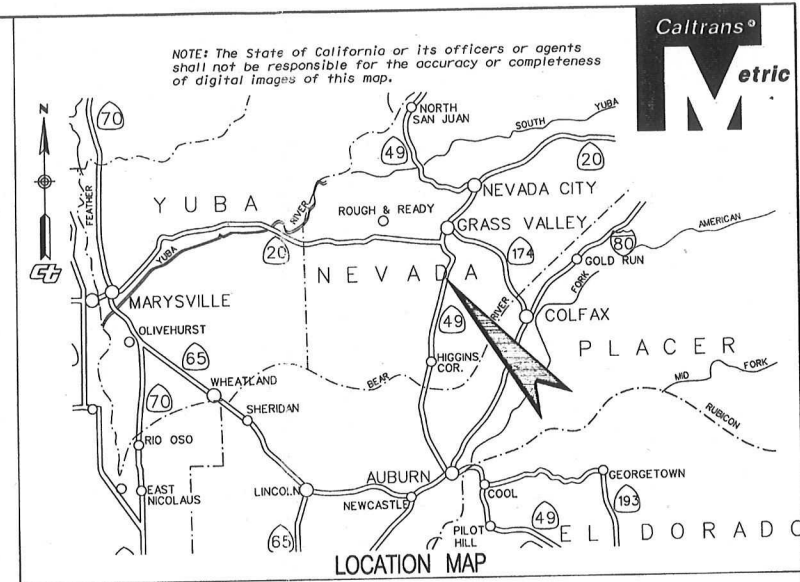
All that certain real property situated in Nevada County, California, shown as Segments 1 through 3, inclusive, on Relinquishment Map No. 035933-X, in State Highway Map Book No. 5, at page 4, as Document No. 20190017713, filed on September 13, 2019, records of Nevada County, California.

EXCEPTING AND RESERVING to the State of California any and all rights of ingress to and egress from the highway hereby relinquished in and to the adjacent and adjoining freeway, except at such points as now are or may be established by resolution of this Commission.

Also RESERVING to the State of California an easement for wildlife  
crossing purposes over a portion of Segment 1 as shown on sheet 2 of said  
Relinquishment Map No. 035933-X.



STATE OF CALIFORNIA  
DEPARTMENT OF TRANSPORTATION  
RIGHT OF WAY RELINQUISHMENT MAP  
STATE HIGHWAY ROUTE 49  
IN NEVADA COUNTY  
HIGHWAY 49 WIDENING AT LA BARR MEADOWS



DATE	BY	REVISIONS
07-18-19	REB	COMMENTS

COORDINATES, BEARINGS AND DISTANCES ARE BASED ON THE CALIFORNIA COORDINATE SYSTEM OF 1983, ZONE 2, EPOCH 1991.35.

COORDINATES AND DISTANCES ARE METERS. TO CONVERT METERS TO U.S. SURVEY FEET, MULTIPLY DISTANCES BY 3937/1200.

MULTIPLY GRID DISTANCES BY 1.00022 TO OBTAIN GROUND DISTANCES.

STATE RIGHTS ARE NOT EXTINGUISHED UNTIL THE RELATED CALIFORNIA TRANSPORTATION COMMISSION RESOLUTION IS RECORDED.

ACCESS PROHIBITED  
DIMENSION POINT  
AREA TO BE RELINQUISHED

RELINQUISHMENT #035933-X  
CTC RESOLUTION NO. \_\_\_\_\_  
RECORDED \_\_\_\_\_  
DOCUMENT # \_\_\_\_\_  
RECORDS OF NEVADA COUNTY

FILED FOR RECORD IN  
STATE HIGHWAY MAPBOOK NO. 5  
DATE 9/13/2019 AT PAGE 4  
RECORDERS INDEX NO. 20190017713  
RECORDS OF NEVADA COUNTY  
(In compliance with Sections 128 & 129 of the  
STREETS & HIGHWAYS Code)

STATE OF CALIFORNIA  
CALIFORNIA STATE TRANSPORTATION AGENCY  
DEPARTMENT OF TRANSPORTATION  
DISTRICT 3  
RIGHT OF WAY ENGINEERING

**RELINQUISHMENT MAP**  
**035933-X**  
**COUNTY OF NEVADA**

*[Signature]* 9/10/19  
LICENSED LAND SURVEYOR DATE

DIST.	CO.	RTE.	POST MILE	SHEET NO.
03	NEV	49	9.9 - 11.0	1 OF 7

*[Professional Seal: David P. Thibault, No. 7199, Exp. 12-31-19, State of California]*

**T. 15 N, R. 8 E, MDM**  
**COUNTY OF NEVADA**  
**SECTION 15**

**SEGMENT 1**  
**3.526 HECTARES (8.71 ACRES)**  
**TO BE RELINQUISHED**

**BRAEMER WAY**  
**DALEWOOD WAY**  
**STATE HWY 49**  
**"A LINE"**

**WILDLIFE CROSSING EASEMENT (SEE NOTE BELOW)**  
**WILDLIFE CROSSING**  
**WILDLIFE CROSSING EASEMENT (A PORTION OF SEGMENT 1)**

**STATE R/W**  
**TO AUBURN**  
**TO GRASS VALLEY**

**NOTE:**  
 RESERVING AN EASEMENT TO THE STATE OF CALIFORNIA  
 FOR WILDLIFE CROSSING PURPOSES OVER A PORTION OF  
 SEGMENT 1 OF THIS RELINQUISHMENT AS SHOWN HEREON.

**NOTE:**  
 COORDINATES, BEARINGS AND DISTANCES ARE BASED ON  
 THE CALIFORNIA COORDINATE SYSTEM OF 1983, ZONE 2,  
 EPOCH 1991.35.  
 COORDINATES AND DISTANCES ARE METERS. TO CONVERT  
 METERS TO U.S. SURVEY FEET, MULTIPLY DISTANCES  
 BY 3937/1200.  
 MULTIPLY GRID DISTANCES BY 1.00022 TO OBTAIN GROUND  
 DISTANCES.  
 STATE RIGHTS ARE NOT EXTINGUISHED UNTIL THE  
 RELATED CALIFORNIA TRANSPORTATION COMMISSION  
 RESOLUTION IS RECORDED.

**LEGEND**  
 ACCESS CONTROL  
 DIMENSION POINT  
 AREA TO BE RELINQUISHED  
 WILDLIFE CROSSING EASEMENT  
 WILDLIFE CROSSING  
 (A PORTION OF SEGMENT 1)

**STATE OF CALIFORNIA**  
**CALIFORNIA STATE TRANSPORTATION AGENCY**  
**DEPARTMENT OF TRANSPORTATION**  
**DISTRICT 3**  
**RIGHT OF WAY ENGINEERING**

**RELINQUISHMENT MAP**  
**035933-X**  
**COUNTY OF NEVADA**

**FILED FOR RECORD IN**  
 STATE HIGHWAY MAPBOOK NO. 5  
 DATE: 9/13/2019 AT PAGE 5  
 RECORDERS INDEX NO. 20190017713  
 RECORDS OF: NEVADA COUNTY: [blank]  
 (In compliance with Sections 128 & 129 of the  
 STREETS & HIGHWAYS Code)

**PROJECT SURVEYOR:** [blank]  
**BY:** [blank]  
**DATE:** [blank]  
**REVISIONS:** [blank]  
**COMMENTS:** [blank]

**NORTHERLY TERMINUS OF THAT CERTAIN COURSE**  
 DESCRIBED AS "NORTH 15°30'17" EAST,  
 70.987 METERS" IN THE DEED RECORDED  
 AS DOCUMENT NUMBER 2010-0017196.



Caltrans<sup>®</sup>  
Metric

BRAEMER WAY

DALEWOOD WAY

TO GRASS VALLEY





STATE R/W

WILDLIFE CROSSING

RAW PROJECT SURVEYOR:			
DATE	REVISIONS	BY	
07-24-19	QLS COMMENTS	REB	
-	-		
-	-		
-	-		
-	-		

NORTHERLY TERMINUS OF THAT CERTAIN COURSE  
DESCRIBED AS "NORTH 15°30'17" EAST,  
70.987 METERS" IN THE DEED RECORDED  
AS DOCUMENT NUMBER 2010-0017196.

NOTE:  
RESERVING AN EASEMENT TO THE STATE OF CALIFORNIA  
FOR WILDLIFE CROSSING PURPOSES OVER A PORTION OF  
SEGMENT 1 OF THIS RELINQUISHMENT AS SHOWN HEREON.

ACCESS CONTROL	
DIMENSION POINT	
AREA TO BE RELINQUISHED	
WILDLIFE CROSSING EASEMENT (A PORTION OF SEGMENT 1)	

COORDINATES, BEARINGS AND DISTANCES ARE BASED ON THE CALIFORNIA COORDINATE SYSTEM OF 1983. ZONE 2, EPOCH 1991.35.

COORDINATES AND DISTANCES ARE METERS. TO CONVERT METERS TO U.S. SURVEY FEET, MULTIPLY DISTANCES BY 3937/1200.

MULTIPLY GRID DISTANCES BY 1.00022 TO OBTAIN GROUND DISTANCES.

STATE RIGHTS ARE NOT EXTINGUISHED UNTIL THE RELATED CALIFORNIA TRANSPORTATION COMMISSION RESOLUTION IS RECORDED.

STATE OF CALIFORNIA  
CALIFORNIA STATE TRANSPORTATION AGENCY  
DEPARTMENT OF TRANSPORTATION  
DISTRICT 3  
RIGHT OF WAY ENGINEERING

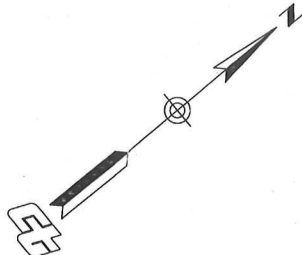
**RELINQUISHMENT MAP**  
**035933-X**  
**COUNTY OF NEVADA**

DIST.	CO.	RTE.	POST MILE	SHEET NO.
03	NEV	49	10.1	2 OF 7



T. 15 N, R. 8 E, MDM  
COUNTY OF NEVADA  
SECTION 15

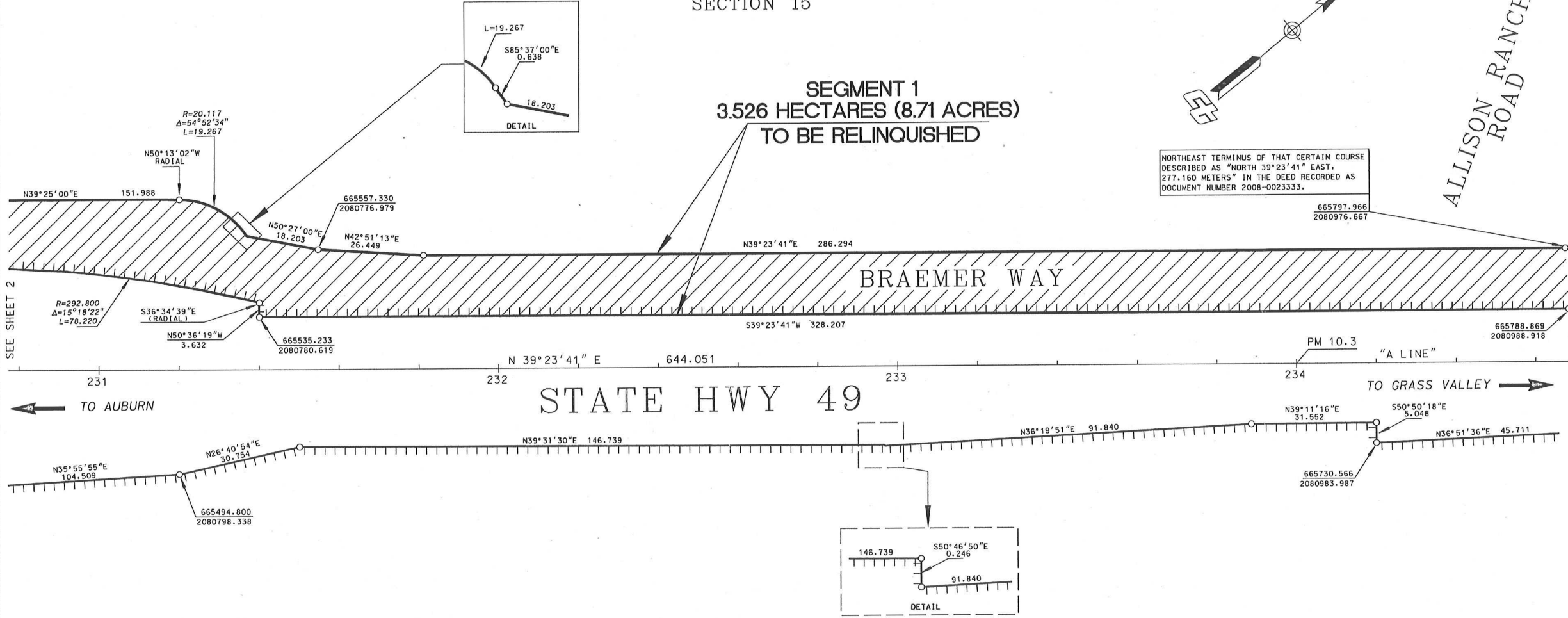
NOTE: The State of California or its officers or agents shall not be responsible for the accuracy or completeness of digital images of this map.



ALLISON RANCH ROAD

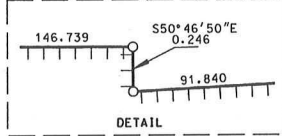
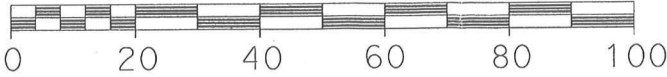
SEGMENT 1  
3.526 HECTARES (8.71 ACRES)  
TO BE RELINQUISHED

NORTHEAST TERMINUS OF THAT CERTAIN COURSE DESCRIBED AS "NORTH 39°23'41" EAST, 277.160 METERS" IN THE DEED RECORDED AS DOCUMENT NUMBER 2008-0023333.



R/W PROJECT SURVEYOR:	DATE	REVISIONS	BY
01-18-19	01-18-19	01-18-19	01-18-19
01-18-19	01-18-19	01-18-19	01-18-19
01-18-19	01-18-19	01-18-19	01-18-19
01-18-19	01-18-19	01-18-19	01-18-19

ACCESS PROHIBITED  
DIMENSION POINT  
AREA TO BE RELINQUISHED



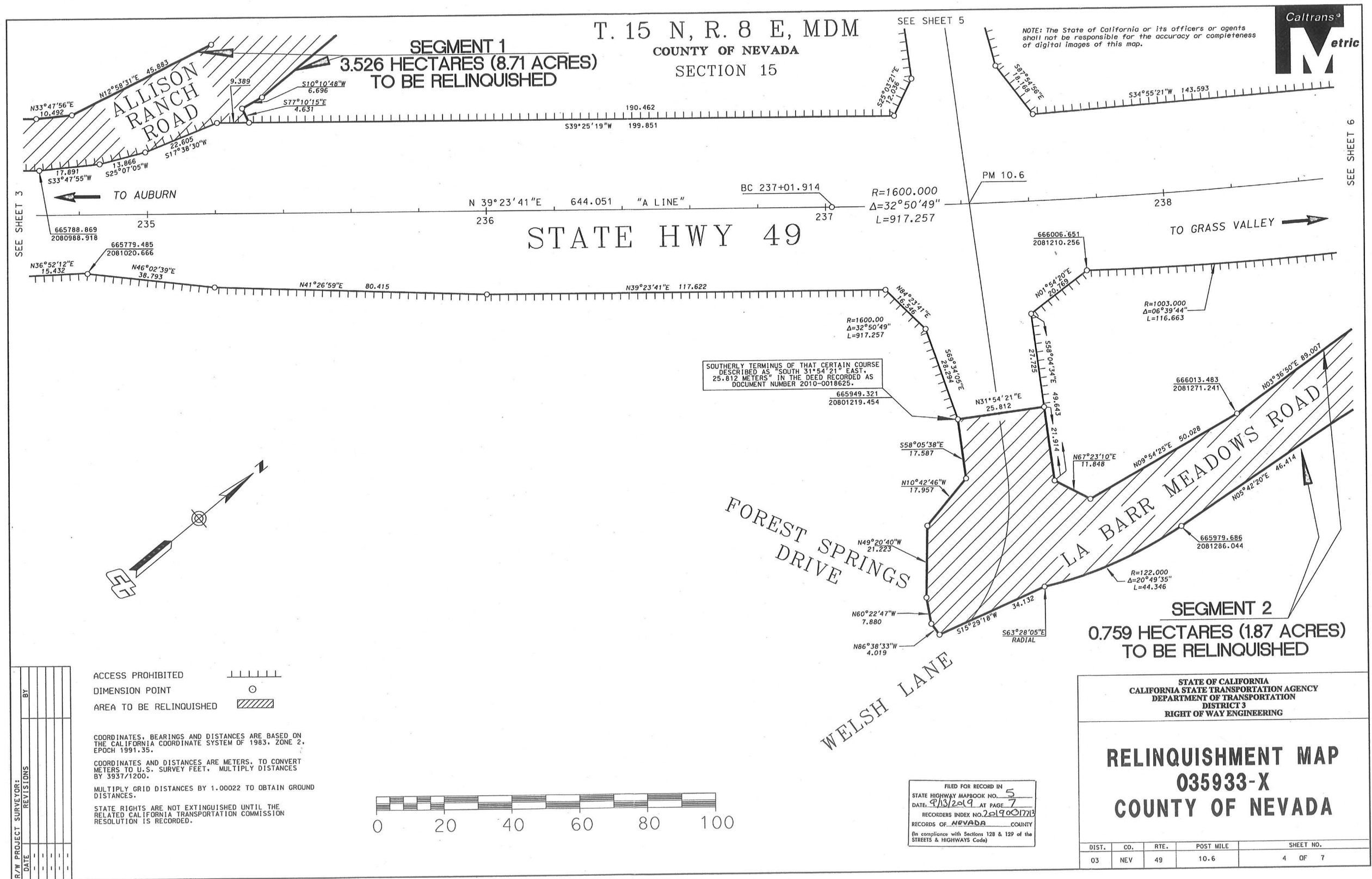
FILED FOR RECORD IN  
STATE HIGHWAY MAPBOOK NO. 5  
DATE 9/13/19 AT PAGE 6  
RECORDERS INDEX NO. 229001713  
RECORDS OF NEVADA COUNTY  
(In compliance with Sections 128 & 129 of the  
STREETS & HIGHWAYS Code)

COORDINATES, BEARINGS AND DISTANCES ARE BASED ON THE CALIFORNIA COORDINATE SYSTEM OF 1983, ZONE 2, EPOCH 1991.35.  
COORDINATES AND DISTANCES ARE METERS. TO CONVERT METERS TO U.S. SURVEY FEET, MULTIPLY DISTANCES BY 3937/1200.  
MULTIPLY GRID DISTANCES BY 1.00022 TO OBTAIN GROUND DISTANCES.  
STATE RIGHTS ARE NOT EXTINGUISHED UNTIL THE RELATED CALIFORNIA TRANSPORTATION COMMISSION RESOLUTION IS RECORDED.

STATE OF CALIFORNIA  
CALIFORNIA STATE TRANSPORTATION AGENCY  
DEPARTMENT OF TRANSPORTATION  
DISTRICT 3  
RIGHT OF WAY ENGINEERING

**RELINQUISHMENT MAP**  
**035933-X**  
**COUNTY OF NEVADA**

DIST.	CO.	RTE.	POST MILE	SHEET NO.
03	NEV	49	10.3	3 OF 7



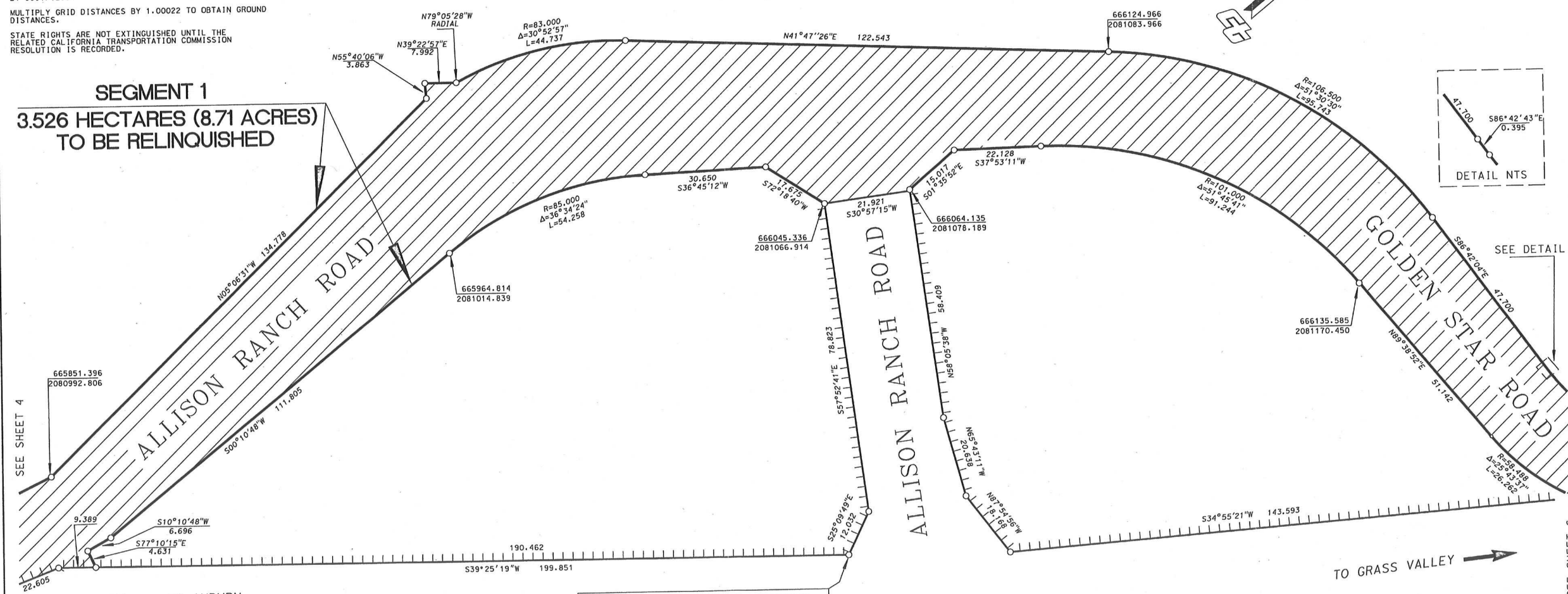
STATE RIGHTS ARE NOT EXTINGUISHED UNTIL THE  
RELATED CALIFORNIA TRANSPORTATION COMMISSION  
RESOLUTION IS RECORDED.

T. 15 N, R. 8 E, MDM  
COUNTY OF NEVADA  
SECTION 15

NOTE: The State of California or its officers or agents shall not be responsible for the accuracy or completeness of digital images of this map.



SEGMENT 1  
3.526 HECTARES (8.71 ACRES)  
TO BE RELINQUISHED



BEGINNING OF THAT CERTAIN COURSE DESCRIBED  
AS "SOUTH 39°25'14" WEST 190.462 METERS"  
IN THE DEED RECORDED AS DOCUMENT NUMBER  
2012-0014558.

STATE OF CALIFORNIA  
CALIFORNIA STATE TRANSPORTATION AGENCY  
DEPARTMENT OF TRANSPORTATION  
DISTRICT 3  
RIGHT OF WAY ENGINEERING

**RELINQUISHMENT MAP**  
**035933-X**  
**COUNTY OF NEVADA**

DIST.	CO.	RTE.	POST MILE	SHEET NO.
Q3	NEV	49	10.6	5 OF 7

R/W PROJECT SURVEYOR:			
DATE	REVISIONS	BY	
	Q/LS COMMENTS	REB	
-	-		
-	-		
-	-		
-	-		

## SECTION 11

Caltrans<sup>®</sup>  
**M**etric

RB#	RADIAL BEARING		
RB1	S03°17'01"W		
RB2	S41°15'16"E		
RB3	S26°04'45"E		

C#	RADIUS	DELTA	LENGTH
C1	55.500	43°58'25"	42.595
C2	59.200	18°51'40"	19.488
C3	591.192	01°05'48"	11.316

L#	BEARING	DISTANCE
L1	S40°41'29"E	2.775
L2	N29°53'04"E	30.963

N21°47'19"E 314.415

GOLDEN STAR ROAD

IIW

STATE HWY 49

NORTHERLY TERMINUS OF THAT CERTAIN COURSE  
DESCRIBED AS "NORTH 23°11'58" EAST, 88.569 METERS"  
IN THE DEED RECORDED AS DOCUMENT NUMBER  
2008-0023330.


STATE OF CALIFORNIA  
CALIFORNIA STATE TRANSPORTATION AGENCY  
DEPARTMENT OF TRANSPORTATION  
DISTRICT 3  
RIGHT OF WAY ENGINEERING

**RELINQUISHMENT MAP**  
**035933-X**  
**COUNTY OF NEVADA**

DIST.	CO.	RTE.	POST MILE	SHEET NO.
03	NEV	49	10.7	6 OF 7

ACCESS PROHIBITED      

DIMENSION POINT      

AREA TO BE RELINQUISHED      

COORDINATES, BEARINGS AND DISTANCES ARE BASED ON  
THE CALIFORNIA COORDINATE SYSTEM OF 1983, ZONE 2,  
EPOCH 1991.35.

COORDINATES AND DISTANCES ARE METERS. TO CONVERT METERS TO U.S. SURVEY FEET, MULTIPLY DISTANCES BY 3937/1200.

MULTIPLY GRID DISTANCES BY 1.00022 TO OBTAIN GROUND DISTANCES.

STATE RIGHTS ARE NOT EXTINGUISHED UNTIL THE  
RELATED CALIFORNIA TRANSPORTATION COMMISSION  
RESOLUTION IS RECORDED.

FILED FOR RECORD IN  
STATE HIGHWAY MAPBOOK NO. 5  
DATE: 9/13/2019 AT PAGE 9  
RECORDERS INDEX NO. 201900177  
RECORDS OF NEVADA COUNTY  
(in compliance with Sections 128 & 129 of  
STREETS & HIGHWAYS Code)



