



Gold Mining Land Use Application Process

BOARD OF SUPERVISORS WORKSHOP

JANUARY 22-24, 2020

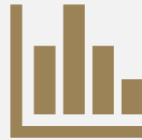
Presentation Outline



Provide background and
information on mining application



Role of the County in process



Issues to be Analyzed

Land Use Application

Applicant - Rise Grass Valley, aka Rise Gold

Submitted Application on November 13, 2019

- Use Permit, Reclamation Plan, Rezone, Variance, Management Plans
 - Dewater existing underground mine workings
 - Mine existing and new underground mine workings
 - Process gold mineralization and rock underground and above ground
 - Place engineered fill at Brunswick and Centennial sites
 - Export fill to other local construction projects

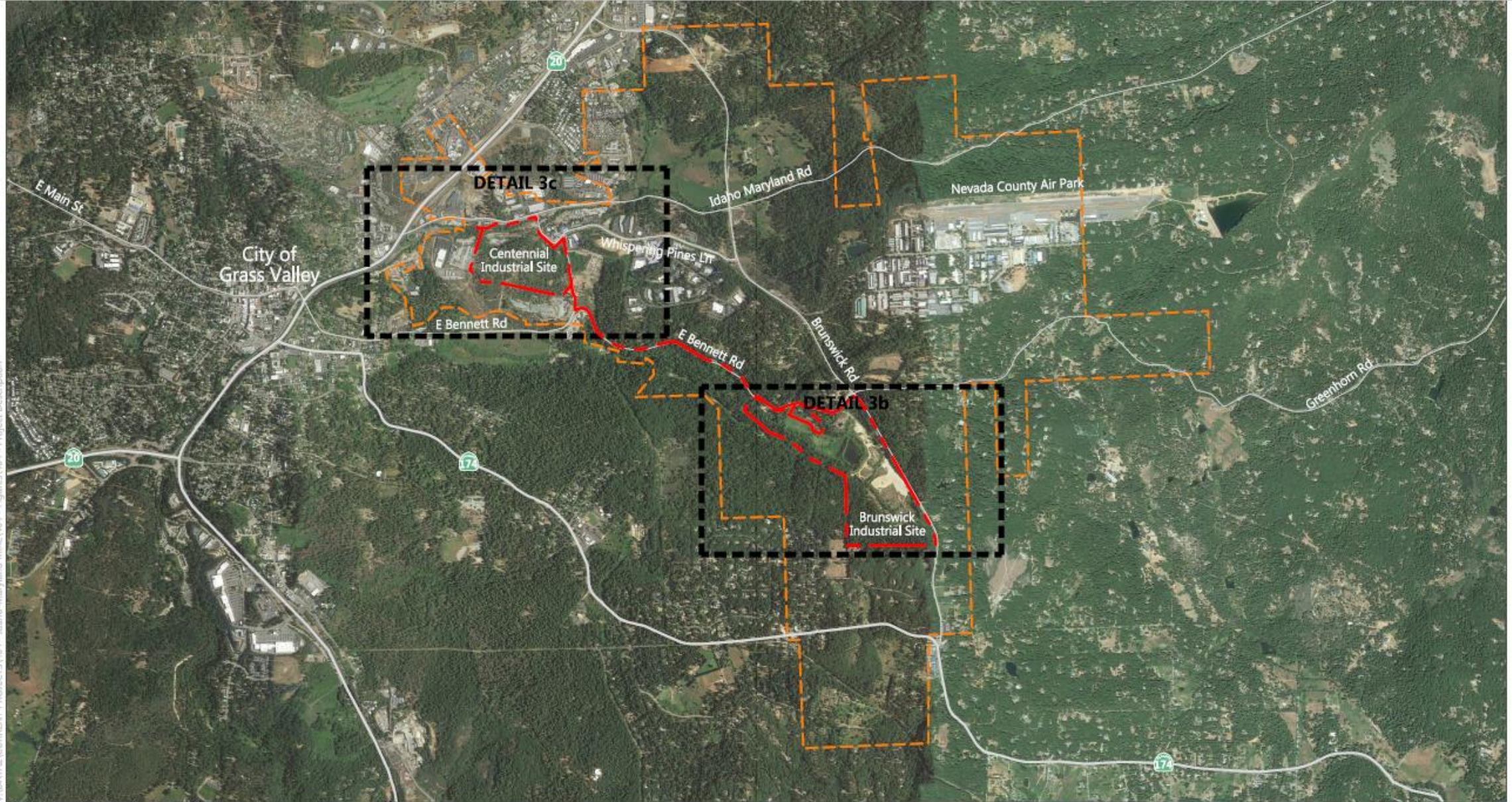
Land Use Application

Proposed Development

- Brunswick Site - Construction of approximately 140,000 square feet new buildings on 29 acres
- Structures range from 15 to 165 feet tall
- 31 acres of site used for placement of fill
- 59 acres in open space
- Centennial Parcel - 37 of 44 acres onsite used for fill

Proposed Operation

- Operate 24 hours a day/7 days a week
- 300+ employees
- 80 year Lifespan of project

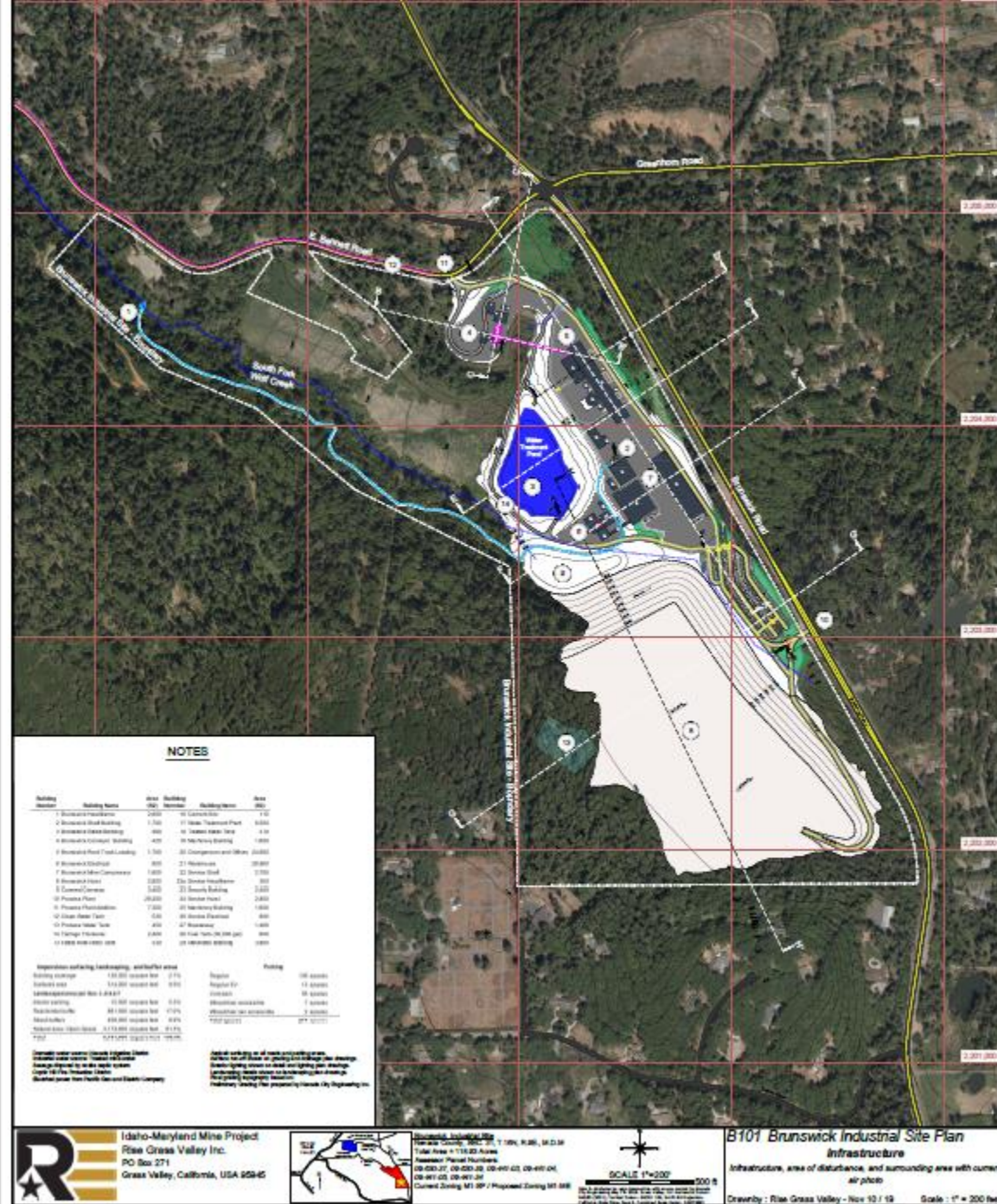


SOURCE: Google Earth Pro (flown 5-17-2018); compiled by Benchmark Resources in 2019

NOTES:

1. New underground workings will not extend within 500 feet of the surface, except at access points on-site.
2. See Figure 3b and Figure 3c for detail maps shown.

- - - Project Boundary
- - - Underground Mineral Rights Boundary
- State Route
- Street



Use Permit and Entitlement Process

Land Use Application Submitted

Routed for Comments Responsible Agencies

Incomplete/Complete Determination

EIR Consultant Contract

EIR Preparation Process

- Scoping Meeting
- Draft EIR
- Public Comment
- Responses to Comments – Final EIR

Public Hearings

- Planning Commission
- Board of Supervisors

Agency Coordination



Department of Mine Reclamation (SMARA)
Financial Assurances, Reclamation plan oversight



Mine Safety and Health Administration
- MSHA - Safety of employees



Department of Toxic Substance Control
Hazardous materials



Regional Water Quality Control Board
Water quality



U.S. and California Fish and Wildlife -
Habitat and resource protection



Fire Marshal, Fire Departments -
Building safety, defensible space, above ground only



City of Grass Valley
Coordination MOU



County Departments
Environmental Health –HMBP, Generators, Septic, Wells
Department of Public Works – County Roads, Circulation
Planning Department – Land Use, CEQA lead

Environmental Analysis

Biological Impacts

- Dewatering
- Discharge into creek
- Erosion and runoff

Traffic/Circulation

- Haul Routes, Construction traffic, operational traffic from employees

Noise

- Blasting
- Processing of material

Geotechnical

- Underground stabilization
- Impacts on wells, groundwater and stability of ground
- Vibrations

Environmental Analysis

Visual/Aesthetics

- Height of structures
- Lighting

Economic Impacts

- Job Creation
- Economic stimulus

Utilities

- Use of Electrical Power

Hazardous Materials

- Onsite Storage
- Impacts to Environmental Resources

Decision-Making Process



Land Use Entitlements

Consistency with General Plan
Consistency with Zoning Ordinance
Appropriate Findings (Use Permit, Rezone, Variance, Management Plans)
Staff Report



CEQA Document

Public Information/Disclosure
Scoping Meetings
Draft EIR, Public Comments, Final EIR
Findings/Statement of Overriding Considerations



Public Hearings

Planning Commission
Board of Supervisors



Follow-Up Permits

Building/Grading, Environmental Health
RWQCB, DTSC, Fish and Wildlife
MSHA Compliance
SMARA Compliance