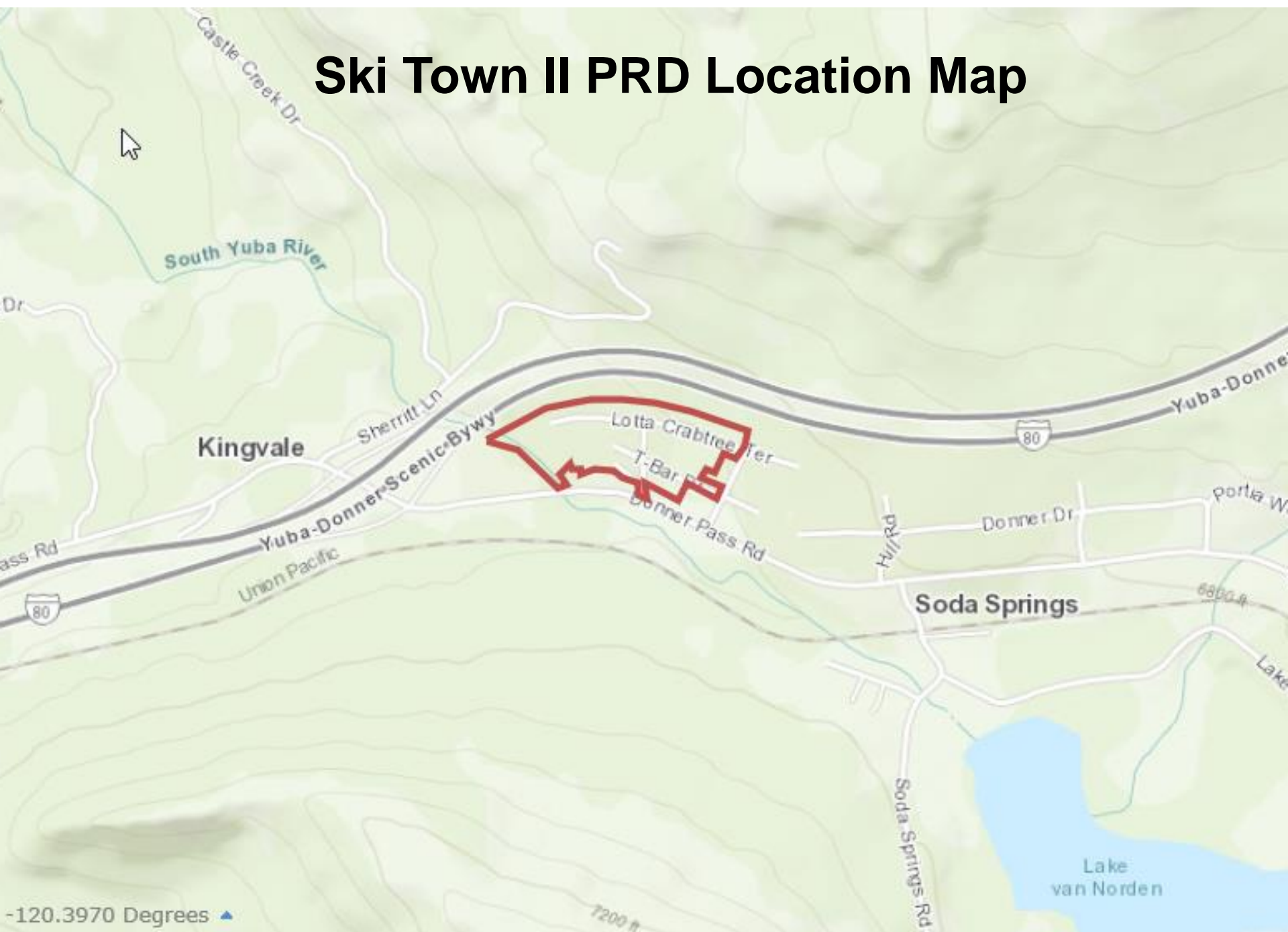
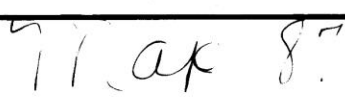

Ski Town II PRD

Parcel Charge Amendments



Ski Town II PRD Location Map





Background

- Located in District 5 in Soda Springs
 - Formed in 1988 for Ski Town II subdivision
 - 54 parcels within PRD boundaries
 - 43 parcels take access from PRD roads
 - No inflationary adjustment currently included
-

Background - Charges

- Existing PRD charges:
 - include snow removal and road maintenance
 - distinguish between improved and unimproved lots
 - distinguish between original subdivision lots and lots outside original subdivision

| Existing Parcel Charges for Ski Town II PRD <i>First adopted by Resolution 96-286</i> | | |
|---|-------------------|-----------------|
| | Unimproved Parcel | Improved Parcel |
| <i>Within Ski Town II Subdivision</i> | | |
| Snow Removal | \$44 | \$175 |
| Road Maintenance | \$53 | \$84 |
| <i>Outside Ski Town II Subdivision</i> | | |
| Snow Removal | \$11 | \$44 |
| Road Maintenance | \$13 | \$21 |

Background – Current Proposal

- Since FY 1996/1997, total assessments are:
 - \$2648 for road maintenance/yr
 - \$3410 for snow removal/yr
- Actual cost of snow removal averages \$18,000/yr
- Meetings and correspondence with property owners in summer/fall 2019 showed support for increasing snow removal charges but no support for increasing road maintenance charges

Current Proposal

- With direction from owners at meeting, ballots propose to:
 - ❑ add CPI adjustment to both road and snow removal assessments
 - ❑ remove distinction between subdivision/non-subdivision roads
 - ❑ remove distinction between improved/unimproved lots
 - ❑ provide a flat charge for snow removal for all affected lots of \$437
 - ❑ remove lots that don't take access from PRD roads

Current Proposal - Charges

| Proposed Parcel Charges for Ski Town II PRD – FY 2020/21 | | |
|--|--------------------|------------------|
| Snow Removal | \$437 annually | |
| Road Maintenance | Unimproved Parcels | Improved Parcels |
| <i>Within Ski Town II subdivision</i> | \$54.32 | \$86.10 |
| <i>Outside Ski Town II subdivision</i> | \$13.32 | \$21.52 |

Procedural Requirements Met

- Board approved Resolution of Intent to amend parcel charges on 3/24/2020
 - Public notices and ballots completed in accordance with Govt and Streets & Hwy Codes
 - Ballots sent to all 54 affected properties
-

Ski Town II PRD - Actions

1. Conduct public hearing
 2. Direct staff to count election ballots
 3. Determine if majority protest exists
 4. If votes supporting PRD > 50% out of ballots received, adopt resolution amending parcel charges beginning in FY 20/21
-