

Redistricting Public Hearing

11/16/2021





Process Review

Today's Goal:

- **Public and Board input on current map scenarios**

Next Steps:

- **Final map creation, posted by December 9th**
- **Board map adoption December 14th**



Top District Map Guidelines

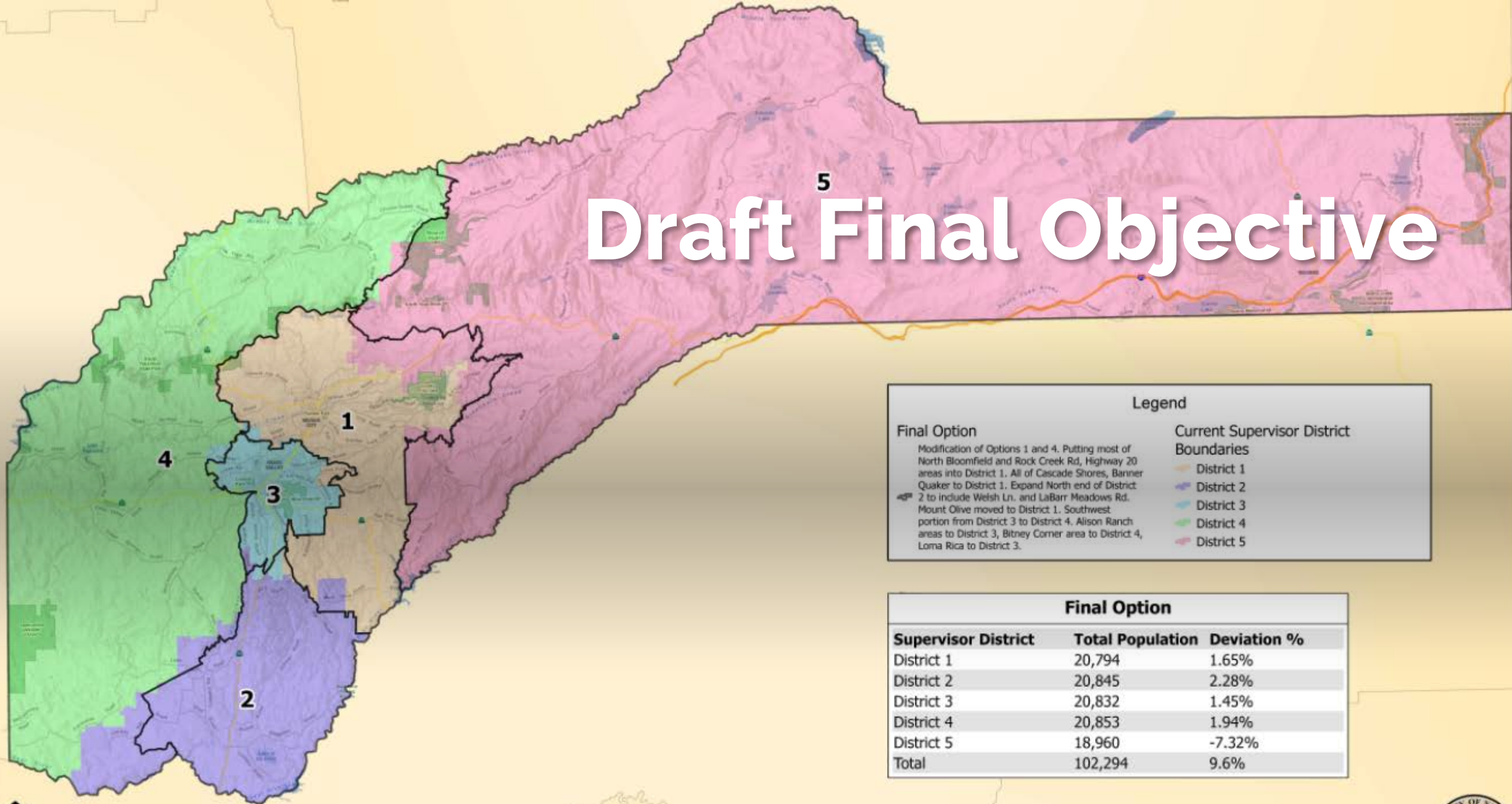
1. No more than 10% total deviation from lowest to highest population district.

- e.g. low district of -4% and high District of 3% would total to 7%
- Ideally no more than 2% deviation for a district
- 1% deviation = 205 residents in Nevada County

2. Keep Communities of Interests whole



Draft Final Objective



Legend

Final Option

Modification of Options 1 and 4. Putting most of North Bloomfield and Rock Creek Rd, Highway 20 areas into District 1. All of Cascade Shores, Banner Quaker to District 1. Expand North end of District 2 to include Welsh Ln. and LaBarr Meadows Rd. Mount Olive moved to District 1. Southwest portion from District 3 to District 4. Alison Ranch areas to District 3, Bitney Corner area to District 4, Loma Rica to District 3.

Current Supervisor District Boundaries

- District 1
- District 2
- District 3
- District 4
- District 5

Final Option

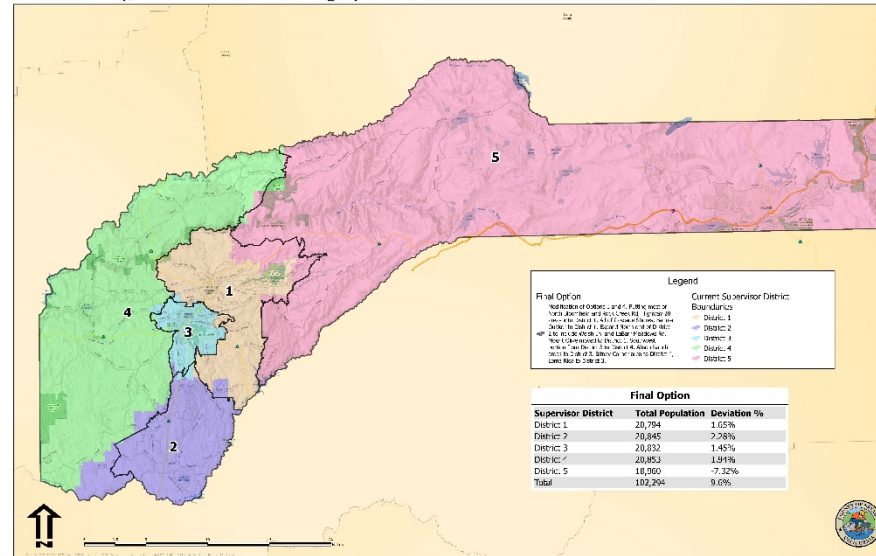
Supervisor District	Total Population	Deviation %
District 1	20,794	1.65%
District 2	20,845	2.28%
District 3	20,832	1.45%
District 4	20,853	1.94%
District 5	18,960	-7.32%
Total	102,294	9.6%



Map Options Public Hearing

- Option 1

Nevada County, CA: 2021 Final Redistricting Option





Process Review

Today's Goal:

- **Public and Board input on current map scenarios**

Next Steps:

- **Final map creation, posted by December 9th**
- **Board map adoption December 14th**

